

# NDUFS3 antibody

**Cat. No. GTX105835**

|                    |                   |
|--------------------|-------------------|
| <b>Host</b>        | Rabbit            |
| <b>Clonality</b>   | Polyclonal        |
| <b>Isotype</b>     | IgG               |
| <b>Application</b> | WB, ICC/IF, IHC-P |
| <b>Reactivity</b>  | Human, Mouse, Rat |

Reference ( 3 )  
 Package  
 100 µl, 25 µl

## APPLICATION

### Application Note

\*Optimal dilutions/concentrations should be determined by the researcher.

| Suggested dilution | Recommended dilution |
|--------------------|----------------------|
| WB                 | 1:500-1:3000         |
| ICC/IF             | 1:100-1:1000         |
| IHC-P              | 1:100-1:1000         |

Not tested in other applications.

**Calculated MW** 30 kDa. ( [Note](#) )

## PROPERTIES

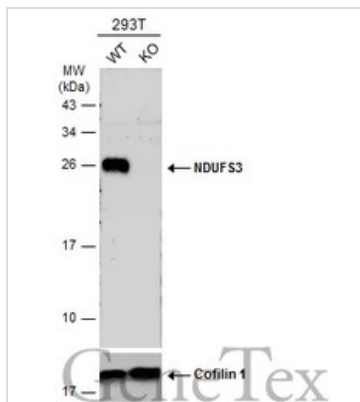
|                      |  |
|----------------------|--|
| <b>Form</b>          | Liquid   |
| <b>Buffer</b>        | PBS, 20% Glycerol  |
| <b>Preservative</b>  | 0.025% ProClin 300   |
| <b>Storage</b>       | Store as concentrated solution. Centrifuge briefly prior to opening vial. For short-term storage (1-2 weeks), store at 4°C. For long-term storage, aliquot and store at -20°C or below. Avoid multiple freeze-thaw cycles. |
| <b>Concentration</b> | 1.31 mg/ml (Please refer to the vial label for the specific concentration.)  |
| <b>Immunogen</b>     | Recombinant protein encompassing a sequence within the center region of human NDUFS3. The exact sequence is proprietary.   |
| <b>Purification</b>  | Purified by antigen-affinity chromatography.   |
| <b>Conjugation</b>   | Unconjugated   |

**Note** For laboratory research use only. Not for any clinical, therapeutic, or diagnostic use in humans or animals. Not for animal or human consumption.

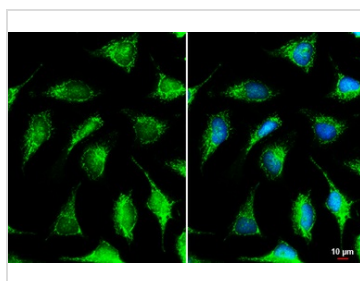
Purchasers shall not, and agree not to enable third parties to, analyze, copy, reverse engineer or otherwise attempt to determine the structure or sequence of the product.



For full product information, images and publications, please visit our [website](#).

**DATA IMAGES**

**GTX105835 WB Image**

Wild-type (WT) and NDUF3 knockout (KO) 293T cell extracts (30 µg) were separated by 12% SDS-PAGE, and the membrane was blotted with NDUF3 antibody (GTX105835) diluted at 1:1000. The HRP-conjugated anti-rabbit IgG antibody (GTX213110-01) was used to detect the primary antibody.


**GTX105835 ICC/IF Image**

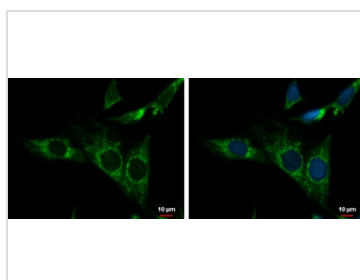
NDUF3 antibody detects NDUF3 protein by immunofluorescent analysis.

Sample: HeLa cells were fixed in ice-cold MeOH for 5 min.

Green: NDUF3 stained by NDUF3 antibody (GTX105835) diluted at 1:500.

Blue: Fluoroshield with DAPI (GTX30920).

Scale bar= 10 µm.

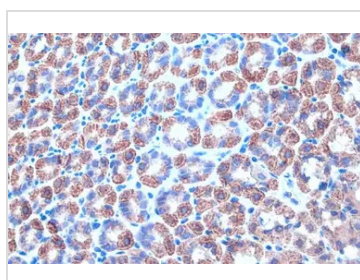

**GTX105835 ICC/IF Image**

NDUF3 antibody detects NDUF3 protein at mitochondria by immunofluorescent analysis.

Sample: SK-N-SH cells were fixed in 2% paraformaldehyde/culture medium at 37°C for 30 min.

Green: NDUF3 protein stained by NDUF3 antibody (GTX105835) diluted at 1:500.

Blue: Hoechst 33342 staining.


**GTX105835 IHC-P Image**

NDUF3 antibody detects NDUF3 protein at mitochondria by immunohistochemical analysis.

Sample: Paraffin-embedded mouse stomach.

NDUF3 stained by NDUF3 antibody (GTX105835) diluted at 1:500.

Antigen Retrieval: Citrate buffer, pH 6.0, 15 min



For full product information, images and publications, please visit our [website](https://www.genetex.com).