

Survivin antibody [32.1]

Cat. No. GTX10584

| | |
|---------------------|------------------------------|
| Host | Mouse |
| Clonality | Monoclonal |
| Isotype | IgG1 |
| Applications | WB, ICC/IF, IHC-P, IP, ELISA |
| Reactivity | Human, Hamster |

References (1)

Package

100 µl

Applications

Application Note

*Optimal dilutions/concentrations should be determined by the researcher.

| Suggested dilution | Recommended dilution |
|--------------------|----------------------|
| WB | 1:1000 |
| ICC/IF | 1:10 - 1:500 |
| IHC-P | 20 µg/ml |
| IP | Assay dependent |
| ELISA | Assay dependent |

Not tested in other applications.

Calculated MW 16 kDa. ([Note](#))**Product Note** This antibody is specific for the nuclear form of survivin.

Properties

| | |
|----------------------|--|
| Form | Liquid |
| Buffer | PBS |
| Preservative | 0.02% Sodium azide |
| Storage | Store as concentrated solution. Centrifuge briefly prior to opening vial. For short-term storage (1-2 weeks), store at 4°C. For long-term storage, aliquot and store at -20°C or below. Avoid multiple freeze-thaw cycles. |
| Concentration | 1.9 mg/ml (Please refer to the vial label for the specific concentration.) |
| Immunogen | Full length recombinant human Survivin [UniProt# O15392] |
| Purification | Protein G purified |
| Conjugation | Unconjugated |



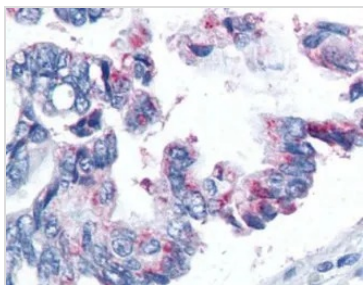
For full product information, images and publications, please visit our [website](#).

For laboratory research use only. Not for any clinical, therapeutic, or diagnostic use in humans or animals. Not for animal or human consumption.

Note

Purchasers shall not, and agree not to enable third parties to, analyze, copy, reverse engineer or otherwise attempt to determine the structure or sequence of the product.

DATA IMAGES



GTX10584 IHC-P Image

IHC-P analysis of human lung cancer tissue using GTX10584 Survivin antibody [32.1].



For full product information, images and publications, please visit our [website](#).