

## DPP3 antibody [N2C1], Internal

Cat. No. GTX105949

<b>Host</b>	Rabbit
<b>Clonality</b>	Polyclonal
<b>Isotype</b>	IgG
<b>Applications</b>	WB, ICC/IF, IHC-P
<b>Reactivity</b>	Human, Mouse

**Package**  
100 µl, 25 µl

## Applications

## Application Note

\*Optimal dilutions/concentrations should be determined by the researcher.

Suggested dilution	Recommended dilution
WB	1:500-1:3000
ICC/IF	1:100-1:1000
IHC-P	1:100-1:1000

Not tested in other applications.

**Calculated MW** 83 kDa. ([Note](#))

## Properties

<b>Form</b>	Liquid
<b>Buffer</b>	0.1M Tris, 0.1M Glycine, 10% Glycerol; 1% BSA
<b>Preservative</b>	0.01% Thimerosal
<b>Storage</b>	Store as concentrated solution. Centrifuge briefly prior to opening vial. For short-term storage (1-2 weeks), store at 4°C. For long-term storage, aliquot and store at -20°C or below. Avoid multiple freeze-thaw cycles.
<b>Concentration</b>	0.49 mg/ml (Please refer to the vial label for the specific concentration.)
<b>Immunogen</b>	Recombinant protein encompassing a sequence within the center region of human DPP3. The exact sequence is proprietary.
<b>Purification</b>	Purified by antigen-affinity chromatography.
<b>Conjugation</b>	Unconjugated

## Note

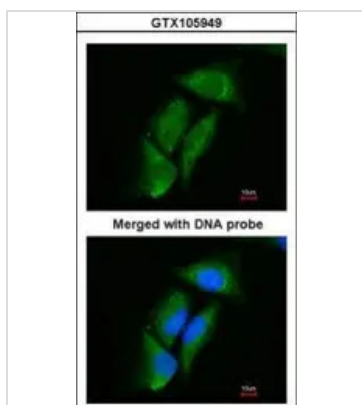
For laboratory research use only. Not for any clinical, therapeutic, or diagnostic use in humans or animals. Not for animal or human consumption.

Purchasers shall not, and agree not to enable third parties to, analyze, copy, reverse engineer or otherwise attempt to determine the structure or sequence of the product.

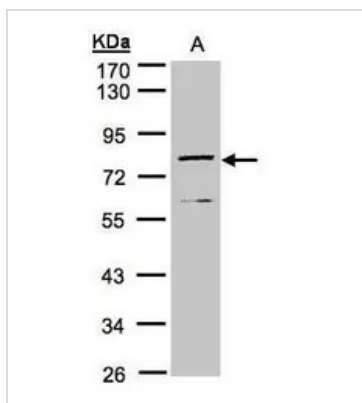


For full product information, images and publications, please visit our [website](#).

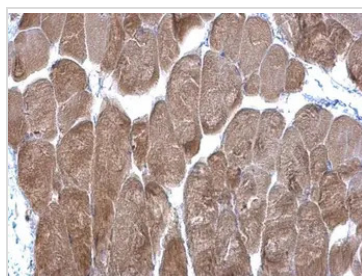
## DATA IMAGES

**GTX105949 ICC/IF Image**

Immunofluorescence analysis of paraformaldehyde-fixed HeLa, using Dipeptidyl-peptidase 3(GTX105949) antibody at 1:200 dilution.

**GTX105949 WB Image**

Sample(30 µg of whole cell lysate)  
A:MOLT4(GTX27912)  
10% SDS PAGE  
GTX105949 diluted at 1:1000

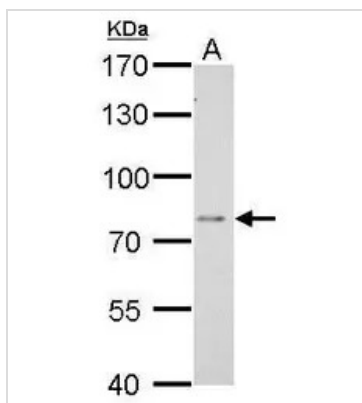
**GTX105949 IHC-P Image**

DPP3 antibody [N2C1], Internal detects DPP3 protein at cytoplasm on mouse muscle by immunohistochemical analysis.

Sample: Paraffin-embedded mouse muscle.

DPP3 antibody [N2C1], Internal (GTX105949) diluted at 1:500.

Antigen Retrieval: Trilogy™ (EDTA based, pH 8.0) buffer, 15min

**GTX105949 WB Image**

DPP3 antibody [N2C1], Internal detects DPP3 protein by Western blot analysis.

A. 30 µg BCL-1 whole cell lysate/extract

7.5 % SDS-PAGE

DPP3 antibody [N2C1], Internal (GTX105949) dilution: 1:1000



For full product information, images and publications, please visit our [website](#).