

Monoamine Oxidase B antibody [N2C3]

Cat. No. GTX105970

Host	Rabbit
Clonality	Polyclonal
Isotype	IgG
Application	WB, ICC/IF, IHC-P, ELISA, IHC, Sandwich ELISA
Reactivity	Human, Mouse

Reference (5)

★★★★★ Review (1)

Package

100 µl, 25 µl

APPLICATION

Application Note

*Optimal dilutions/concentrations should be determined by the researcher.

Suggested dilution	Recommended dilution
WB	1:500-1:3000
ICC/IF	1:100-1:1000
IHC-P	1:100-1:1000
ELISA	1:1000-1:10000
IHC	Assay dependent
Sandwich ELISA	Assay dependent

Note : Capture: GTX105970 , Detection: GTX89368

Not tested in other applications.

Calculated MW 59 kDa. ([Note](#))

PROPERTIES

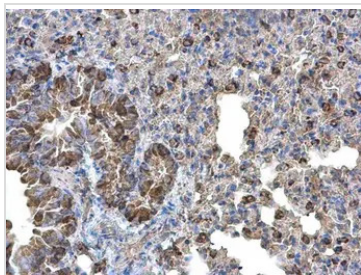
Form	Liquid
Buffer	PBS, 20% Glycerol
Preservative	0.025% ProClin 300
Storage	Store as concentrated solution. Centrifuge briefly prior to opening vial. For short-term storage (1-2 weeks), store at 4°C. For long-term storage, aliquot and store at -20°C or below. Avoid multiple freeze-thaw cycles.
Concentration	0.51 mg/ml (Please refer to the vial label for the specific concentration.)
Immunogen	Recombinant protein encompassing a sequence within the center region of human Monoamine Oxidase B. The exact sequence is proprietary.
Purification	Purified by antigen-affinity chromatography.
Conjugation	Unconjugated

For full product information, images and publications, please visit our [website](#).

For laboratory research use only. Not for any clinical, therapeutic, or diagnostic use in humans or animals. Not for animal or human consumption.

Note

Purchasers shall not, and agree not to enable third parties to, analyze, copy, reverse engineer or otherwise attempt to determine the structure or sequence of the product.

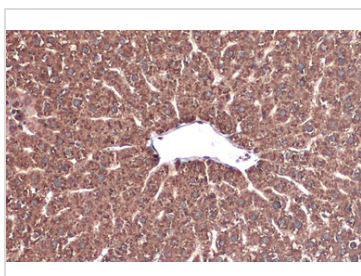
DATA IMAGES

GTx105970 IHC-P Image

Monoamine Oxidase B antibody [N2C3] detects Monoamine Oxidase B protein at cytoplasm on mouse lung by immunohistochemical analysis.

Sample: Paraffin-embedded mouse lung.

Monoamine Oxidase B antibody [N2C3] (GTx105970) diluted at 1:500.

Antigen Retrieval: Trilogy™ (EDTA based, pH 8.0) buffer, 15min

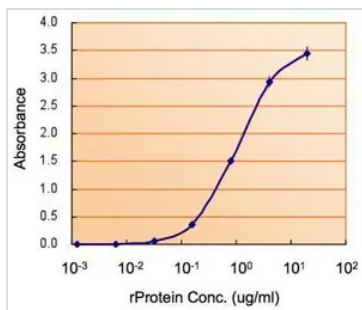

GTx105970 IHC-P Image

Monoamine Oxidase B antibody [N2C3] detects Monoamine Oxidase B protein at cytoplasm by immunohistochemical analysis.

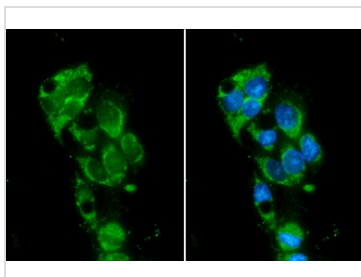
Sample: Paraffin-embedded mouse liver.

Monoamine Oxidase B stained by Monoamine Oxidase B antibody [N2C3] (GTx105970) diluted at 1:500.

Antigen Retrieval: Citrate buffer, pH 6.0, 15 min


GTx105970 ELISA Image

ELISA detection of MAOB using GTx105970 for capture at a concentration of 2.5 µg/mL and GTx89368 for detection at a concentration of 0.5 µg/mL.


GTx105970 ICC/IF Image

Monoamine Oxidase B antibody [N2C3] detects Monoamine Oxidase B protein at mitochondria by immunofluorescent analysis.

Sample: HepG2 cells were fixed in ice-cold MeOH for 5 min.

Green: Monoamine Oxidase B stained by Monoamine Oxidase B antibody [N2C3] (GTx105970) diluted at 1:500.

Blue: Hoechst 33342 staining.



For full product information, images and publications, please visit our [website](https://www.genetex.com).