

BAT1 antibody [N1C3]

Cat. No. GTX106001

Host	Rabbit
Clonality	Polyclonal
Isotype	IgG
Applications	WB, ICC/IF, IHC-P, IHC-Wm
Reactivity	Human, Zebrafish

Package
100 µl, 25 µl

Applications

Application Note

*Optimal dilutions/concentrations should be determined by the researcher.

Suggested dilution	Recommended dilution
WB	1:500-1:3000
ICC/IF	1:100-1:1000
IHC-P	1:100-1:1000
IHC-Wm	Assay dependent

Not tested in other applications.

Properties

Form	Liquid
Buffer	PBS, 1% BSA, 20% Glycerol
Preservative	0.01% Thimerosal
Storage	Store as concentrated solution. Centrifuge briefly prior to opening vial. For short-term storage (1-2 weeks), store at 4°C. For long-term storage, aliquot and store at -20°C or below. Avoid multiple freeze-thaw cycles.
Concentration	1 mg/ml (Please refer to the vial label for the specific concentration.)
Immunogen	Recombinant protein encompassing a sequence within the center region of human BAT1. The exact sequence is proprietary.
Purification	Purified by antigen-affinity chromatography.
Conjugation	Unconjugated

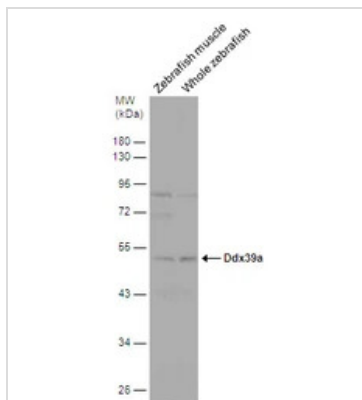
Note

For laboratory research use only. Not for any clinical, therapeutic, or diagnostic use in humans or animals. Not for animal or human consumption.

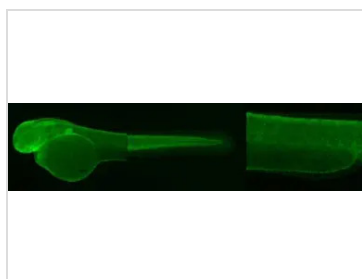
Purchasers shall not, and agree not to enable third parties to, analyze, copy, reverse engineer or otherwise attempt to determine the structure or sequence of the product.



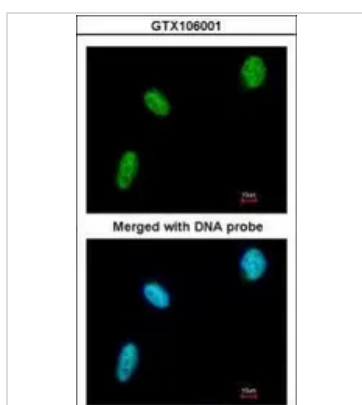
For full product information, images and publications, please visit our [website](#).

DATA IMAGES

GTK106001 WB Image

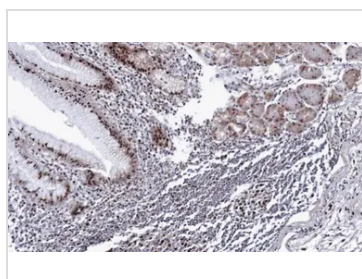
Various tissue extracts (30 µg) were separated by 10% SDS-PAGE, and the membrane was blotted with BAT1 antibody [N1C3] (GTK106001) diluted at 1:500.


GTK106001 IHC-Wm Image

Immunohistochemical analysis (whole mount) of zebrafish embryo, using BAT1 antibody [N1C3] (GTK106001) at 1:200 dilution.


GTK106001 ICC/IF Image

Immunofluorescence analysis of paraformaldehyde-fixed HeLa, using DDX39(GTK106001) antibody at 1:200 dilution.


GTK106001 IHC-P Image

Immunohistochemical analysis of paraffin-embedded human gastric cancer, using DDX39(GTK106001) antibody at 1:100 dilution.

Antigen Retrieval: Trilogy™ (EDTA based, pH 8.0) buffer, 15min



For full product information, images and publications, please visit our [website](https://www.genetex.com).