

Adenylate kinase 1 antibody [N1C3]

Cat. No. GTX106079

Host	Rabbit
Clonality	Polyclonal
Isotype	IgG
Application	WB, IHC-P
Reactivity	Human, Mouse

Package
100 µl, 25 µl

APPLICATION

Application Note

*Optimal dilutions/concentrations should be determined by the researcher.

Suggested dilution	Recommended dilution
WB	1:500-1:3000
IHC-P	1:100-1:1000

Not tested in other applications.

Calculated MW 22 kDa. ([Note](#))

PROPERTIES

Form	Liquid
Buffer	0.1M Tris, 0.1M Glycine, 10% Glycerol
Preservative	0.01% Thimerosal
Storage	Store as concentrated solution. Centrifuge briefly prior to opening vial. For short-term storage (1-2 weeks), store at 4°C. For long-term storage, aliquot and store at -20°C or below. Avoid multiple freeze-thaw cycles.
Concentration	0.4 mg/ml (Please refer to the vial label for the specific concentration.)
Immunogen	Recombinant protein encompassing a sequence within the center region of human Adenylate kinase 1. The exact sequence is proprietary.
Purification	Purified by antigen-affinity chromatography.
Conjugation	Unconjugated

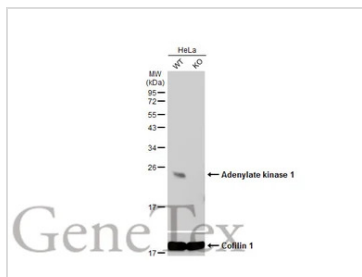
Note

For laboratory research use only. Not for any clinical, therapeutic, or diagnostic use in humans or animals. Not for animal or human consumption.

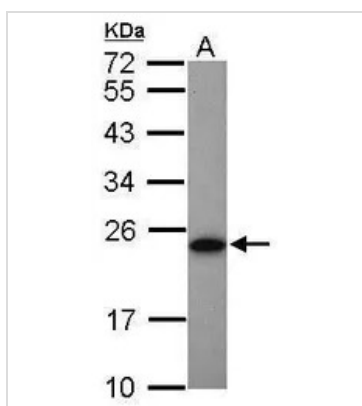
Purchasers shall not, and agree not to enable third parties to, analyze, copy, reverse engineer or otherwise attempt to determine the structure or sequence of the product.



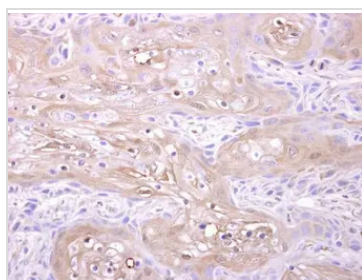
For full product information, images and publications, please visit our [website](#).

DATA IMAGES

GTX106079 WB Image

Wild-type (WT) and Adenylate kinase 1 knockout (KO) HeLa cell extracts (30 μ g) were separated by 12% SDS-PAGE, and the membrane was blotted with Adenylate kinase 1 antibody [N1C3] (GTX106079) diluted at 1:500. The HRP-conjugated anti-rabbit IgG antibody (GTX213110-01) was used to detect the primary antibody.


GTX106079 WB Image

Sample (50 ug of whole cell lysate)
A: Mouse brown adipose tissue
12% SDS PAGE
GTX106079 diluted at 1:1000


GTX106079 IHC-P Image

Adenylate kinase 1 antibody [N1C3] detects Adenylate kinase 1 protein at cytosol on Ca922 xenograft by immunohistochemical analysis.

Sample: Paraffin-embedded Ca922 xenograft.

Adenylate kinase 1 antibody [N1C3] (GTX106079) dilution: 1:500.

Antigen Retrieval: Trilogy™ (EDTA based, pH 8.0) buffer, 15min



For full product information, images and publications, please visit our [website](https://www.genetex.com).