

Profilin 1 antibody

Cat. No. GTX10608

Host	Rabbit
Clonality	Polyclonal
Isotype	IgG
Application	WB
Reactivity	Human, Mouse, Rat, Pig

Package

50 µl

APPLICATION

Application Note

*Optimal dilutions/concentrations should be determined by the researcher.

Suggested dilution	Recommended dilution
WB	0.1 - 0.2 µg/ml

Not tested in other applications.

Calculated MW 15 kDa. ([Note](#))

Product Note This antibody is specific for profilin I protein but also reacts with profilin II.

PROPERTIES

Form	Liquid
Buffer	PBS, 30% Glycerol
Preservative	0.1% Sodium azide
Storage	Store as concentrated solution. Centrifuge briefly prior to opening vial. For short-term storage (1-2 weeks), store at 4°C. For long-term storage, aliquot and store at -20°C or below. Avoid multiple freeze-thaw cycles.
Concentration	0.1 mg/ml (Please refer to the vial label for the specific concentration.)
Immunogen	Porcine and human platelet Profilin 1
Purification	Purified by antigen-affinity chromatography
Conjugation	Unconjugated

Note

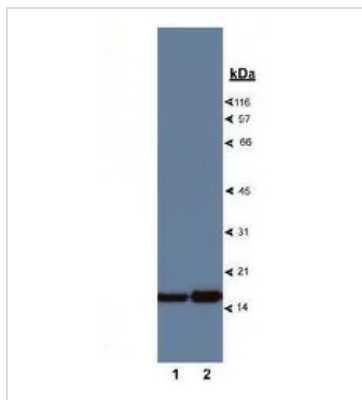
For laboratory research use only. Not for any clinical, therapeutic, or diagnostic use in humans or animals. Not for animal or human consumption.

Purchasers shall not, and agree not to enable third parties to, analyze, copy, reverse engineer or otherwise attempt to determine the structure or sequence of the product.



For full product information, images and publications, please visit our [website](#).

DATA IMAGES



GTX10608 WB Image

WB analysis of HeLa cell lysate using GTX10608 Profilin 1 antibody.

Lane 1 : 0.1 ug/ml

Lane 2 : 0.5 ug/ml

Dilution : 1 µg/ml

Loading : 30µg



For full product information, images and publications, please visit our [website](#).