

Sorcin antibody [N1C3]

Cat. No. GTX106105

Host	Rabbit
Clonality	Polyclonal
Isotype	IgG
Application	WB, IP
Reactivity	Human, Mouse

Package
100 µl, 25 µl

APPLICATION

Application Note

*Optimal dilutions/concentrations should be determined by the researcher.

Suggested dilution	Recommended dilution
WB	1:500-1:3000
IP	1:100-1:500

Not tested in other applications.

Calculated MW 22 kDa. ([Note](#))

PROPERTIES

Form	Liquid
Buffer	0.1M Tris, 0.1M Glycine, 10% Glycerol
Preservative	0.01% Thimerosal
Storage	Store as concentrated solution. Centrifuge briefly prior to opening vial. For short-term storage (1-2 weeks), store at 4°C. For long-term storage, aliquot and store at -20°C or below. Avoid multiple freeze-thaw cycles.
Concentration	0.65 mg/ml (Please refer to the vial label for the specific concentration.)
Immunogen	Recombinant protein encompassing a sequence within the center region of human Sorcin. The exact sequence is proprietary.
Purification	Purified by antigen-affinity chromatography.
Conjugation	Unconjugated

Note

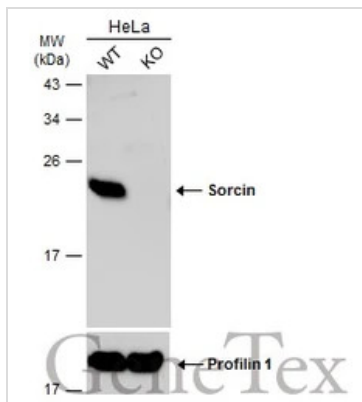
For laboratory research use only. Not for any clinical, therapeutic, or diagnostic use in humans or animals. Not for animal or human consumption.

Purchasers shall not, and agree not to enable third parties to, analyze, copy, reverse engineer or otherwise attempt to determine the structure or sequence of the product.



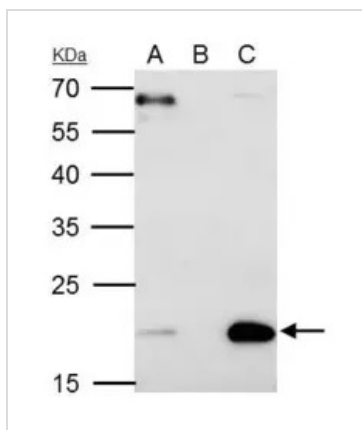
For full product information, images and publications, please visit our [website](#).

DATA IMAGES



GTK106105 WB Image

Wild-type (WT) and Sorcin knockout (KO) HeLa cell extracts (30 μ g) were separated by 12% SDS-PAGE, and the membrane was blotted with Sorcin antibody [N1C3] (GTK106105) diluted at 1:500. The HRP-conjugated anti-rabbit IgG antibody (GTK213110-01) was used to detect the primary antibody.



GTK106105 IP Image

Sorcin antibody [N1C3] immunoprecipitates Sorcin protein in IP experiments.

IP samples: HeLa whole cell extract

A. 40 μ g HeLa whole cell extract

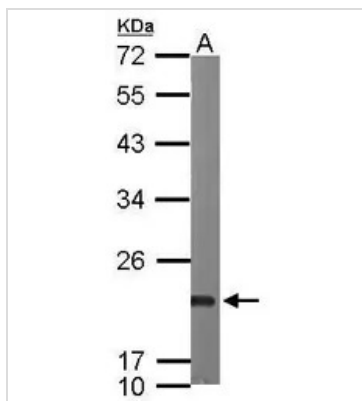
B. Control with 4 μ g of preimmune Rabbit IgG

C. Immunoprecipitation of Sorcin protein by 4 μ g Sorcin antibody [N1C3] (GTK106105)

12 % SDS-PAGE

The immunoprecipitated Sorcin protein was detected by Sorcin antibody [N1C3] (GTK106105) diluted at 1:500.

[EasyBlot anti-rabbit IgG (GTK221666-01) was used as a secondary reagent]



GTK106105 WB Image

Sample (50 ug of whole cell lysate)

A: mouse heart

12% SDS PAGE

GTK106105 diluted at 1:1000



For full product information, images and publications, please visit our [website](https://www.genetex.com).