

## Sorcin antibody [N1C3]

**Cat. No. GTX106105**

<b>Host</b>	Rabbit
<b>Clonality</b>	Polyclonal
<b>Isotype</b>	IgG
<b>Applications</b>	WB, IP
<b>Reactivity</b>	Human, Mouse

**Package**  
100 µl, 25 µl

### Applications

#### Application Note

\*Optimal dilutions/concentrations should be determined by the researcher.

Suggested dilution	Recommended dilution
WB	1:500-1:3000
IP	1:100-1:500

Not tested in other applications.

**Calculated MW** 22 kDa. ( [Note](#) )

### Properties

<b>Form</b>	Liquid
<b>Buffer</b>	0.1M Tris, 0.1M Glycine, 10% Glycerol
<b>Preservative</b>	0.01% Thimerosal
<b>Storage</b>	Store as concentrated solution. Centrifuge briefly prior to opening vial. For short-term storage (1-2 weeks), store at 4°C. For long-term storage, aliquot and store at -20°C or below. Avoid multiple freeze-thaw cycles.
<b>Concentration</b>	0.65 mg/ml (Please refer to the vial label for the specific concentration.)
<b>Immunogen</b>	Recombinant protein encompassing a sequence within the center region of human Sorcin. The exact sequence is proprietary.
<b>Purification</b>	Purified by antigen-affinity chromatography.
<b>Conjugation</b>	Unconjugated

#### Note

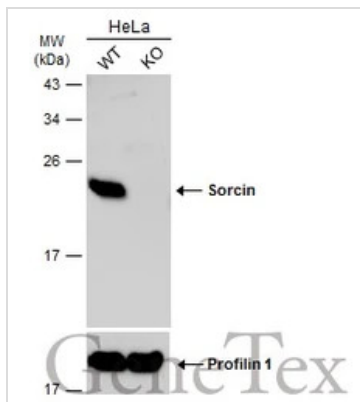
For laboratory research use only. Not for any clinical, therapeutic, or diagnostic use in humans or animals. Not for animal or human consumption.

Purchasers shall not, and agree not to enable third parties to, analyze, copy, reverse engineer or otherwise attempt to determine the structure or sequence of the product.



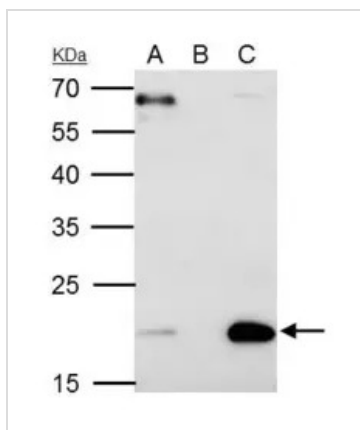
For full product information, images and publications, please visit our [website](#).

## DATA IMAGES



### GTX106105 WB Image

Wild-type (WT) and Sorcin knockout (KO) HeLa cell extracts (30 µg) were separated by 12% SDS-PAGE, and the membrane was blotted with Sorcin antibody [N1C3] (GTX106105) diluted at 1:500. The HRP-conjugated anti-rabbit IgG antibody (GTX213110-01) was used to detect the primary antibody.



### GTX106105 IP Image

Sorcin antibody [N1C3] immunoprecipitates Sorcin protein in IP experiments.

IP samples: HeLa whole cell extract

A. 40 µg HeLa whole cell extract

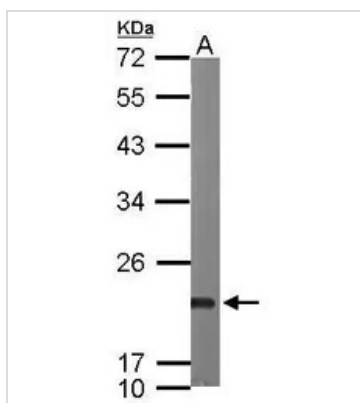
B. Control with 4 µg of preimmune Rabbit IgG

C. Immunoprecipitation of Sorcin protein by 4 µg Sorcin antibody [N1C3] (GTX106105)

12 % SDS-PAGE

The immunoprecipitated Sorcin protein was detected by Sorcin antibody [N1C3] (GTX106105) diluted at 1:500.

[EasyBlot anti-rabbit IgG (GTX221666-01) was used as a secondary reagent]



### GTX106105 WB Image

Sample (50 ug of whole cell lysate)

A: mouse heart

12% SDS PAGE

GTX106105 diluted at 1:1000



For full product information, images and publications, please visit our [website](https://www.genetex.com).