

HSPA6 antibody [C1C3]

Cat. No. GTX106192

Host	Rabbit
Clonality	Polyclonal
Isotype	IgG
Applications	WB, ICC/IF, IHC-P
Reactivity	Human

Package
100 µl, 25 µl

Applications

Application Note

*Optimal dilutions/concentrations should be determined by the researcher.

Suggested dilution	Recommended dilution
WB	1:500-1:3000
ICC/IF	1:100-1:1000
IHC-P	1:100-1:1000

Not tested in other applications.

Calculated MW 71 kDa. ([Note](#))

Properties

Form	Liquid
Buffer	0.1M Tris, 0.1M Glycine, 10% Glycerol
Preservative	0.01% Thimerosal
Storage	Store as concentrated solution. Centrifuge briefly prior to opening vial. For short-term storage (1-2 weeks), store at 4°C. For long-term storage, aliquot and store at -20°C or below. Avoid multiple freeze-thaw cycles.
Concentration	1 mg/ml (Please refer to the vial label for the specific concentration.)
Immunogen	Recombinant protein encompassing a sequence within the center region of human HSPA6. The exact sequence is proprietary.
Purification	Purified by antigen-affinity chromatography.
Conjugation	Unconjugated

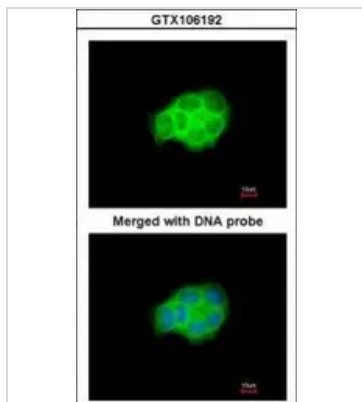
Note

For laboratory research use only. Not for any clinical, therapeutic, or diagnostic use in humans or animals. Not for animal or human consumption.

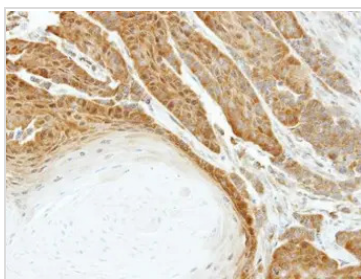
Purchasers shall not, and agree not to enable third parties to, analyze, copy, reverse engineer or otherwise attempt to determine the structure or sequence of the product.



For full product information, images and publications, please visit our [website](#).

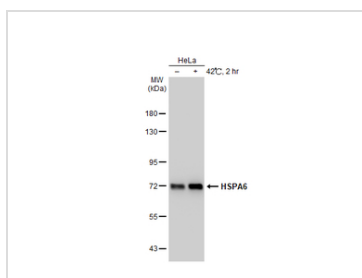
DATA IMAGES

GTx106192 ICC/IF Image

Immunofluorescence analysis of paraformaldehyde-fixed A431, using HSPA6(GTx106192) antibody at 1:200 dilution.

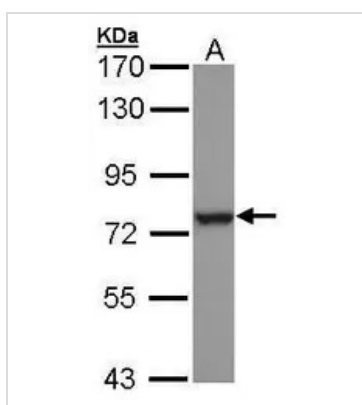

GTx106192 IHC-P Image

Immunohistochemical analysis of paraffin-embedded SG xenograft, using HSPA6(GTx106192) antibody at 1:500 dilution.

Antigen Retrieval: Citrate buffer, pH 6.0, 15 min


GTx106192 WB Image

Untreated (-) and treated (+) HeLa whole cell extracts (30 µg) were separated by 7.5% SDS-PAGE, and the membrane was blotted with HSPA6 antibody [C1C3] (GTx106192) diluted at 1:40000. The HRP-conjugated anti-rabbit IgG antibody (GTx213110-01) was used to detect the primary antibody.


GTx106192 WB Image

Sample (30 ug of whole cell lysate)

A: H1299

7.5% SDS PAGE

GTx106192 diluted at 1:1000



For full product information, images and publications, please visit our [website](https://www.genetex.com).