

Gli1 antibody

Cat. No. GTX106207

Host	Rabbit
Clonality	Polyclonal
Isotype	IgG
Applications	WB, ICC/IF, IHC-P, IP
Reactivity	Human, Mouse

References (2)

★★★★★ Review (1)

Package

100 µl, 25 µl

Applications

Application Note

*Optimal dilutions/concentrations should be determined by the researcher.

Suggested dilution	Recommended dilution
WB	1:500-1:10000
ICC/IF	1:100-1:1000
IHC-P	Assay dependent
IP	1:1000-1:1000

Not tested in other applications.

Calculated MW 118 kDa. ([Note](#))

Properties

Form	Liquid
Buffer	PBS, 20% Glycerol
Preservative	0.025% ProClin 300
Storage	Store as concentrated solution. Centrifuge briefly prior to opening vial. For short-term storage (1-2 weeks), store at 4°C. For long-term storage, aliquot and store at -20°C or below. Avoid multiple freeze-thaw cycles.
Concentration	1.12 mg/ml (Please refer to the vial label for the specific concentration.)
Immunogen	Recombinant protein encompassing a sequence within the center region of human GLI1. The exact sequence is proprietary.
Purification	Purified by antigen-affinity chromatography.
Conjugation	Unconjugated

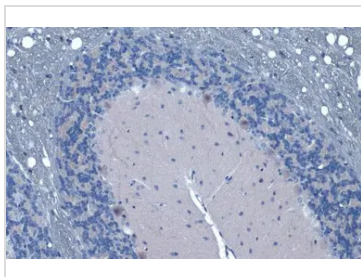
Note

For laboratory research use only. Not for any clinical, therapeutic, or diagnostic use in humans or animals. Not for animal or human consumption.

Purchasers shall not, and agree not to enable third parties to, analyze, copy, reverse engineer or otherwise attempt to determine the structure or sequence of the product.

For full product information, images and publications, please visit our [website](#).

DATA IMAGES



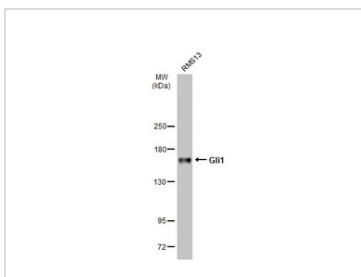
GTX106207 IHC-P Image

Gli1 antibody detects Gli1 protein at cytoplasm and nucleus by immunohistochemical analysis.

Sample: Paraffin-embedded mouse cerebellum.

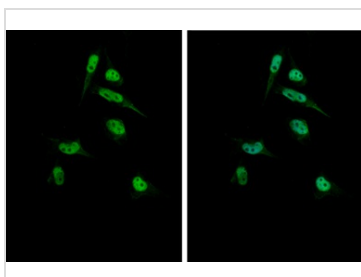
Gli1 stained by Gli1 antibody (GTX106207) diluted at 1:500.

Antigen Retrieval: Citrate buffer, pH 6.0, 15 min



GTX106207 WB Image

RMS13 whole cell extract (30 µg) was separated by 5% SDS-PAGE, and the membrane was blotted with Gli1 antibody (GTX106207) diluted at 1:1000. The HRP-conjugated anti-rabbit IgG antibody (GTX213110-01) was used to detect the primary antibody.

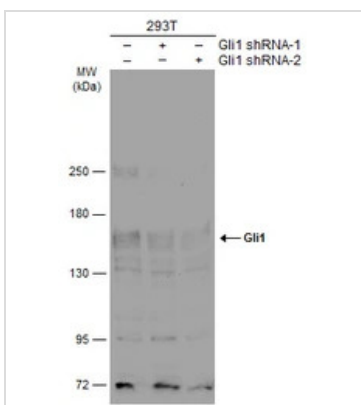


GTX106207 ICC/IF Image

Gli1 antibody detects Gli1 protein at nucleus by immunofluorescent analysis.

Sample: RMS-13 cells were fixed in 4% paraformaldehyde at RT for 15 min.

Green: Gli1 stained by Gli1 antibody (GTX106207) diluted at 1:500.



GTX106207 WB Image

293T whole cell extracts (30 µg) were separated by 5% SDS-PAGE, and the membrane was blotted with Gli1 antibody (GTX106207) diluted at 1:500. The HRP-conjugated anti-rabbit IgG antibody (GTX213110-01) was used to detect the primary antibody.



For full product information, images and publications, please visit our [website](https://www.genetex.com).