

## ERR alpha antibody [N1C3]

Cat. No. GTX106233

Host	Rabbit
Clonality	Polyclonal
Isotype	IgG
Applications	WB, IHC-P, IP, ChIP assay
Reactivity	Human

Package  
100 µl, 25 µl

## Applications

## Application Note

\*Optimal dilutions/concentrations should be determined by the researcher.

Suggested dilution	Recommended dilution
WB	1:500-1:3000
IHC-P	Assay dependent
IP	1:100-1:500
ChIP assay	Assay dependent

Not tested in other applications.

Calculated MW 46 kDa. ( [Note](#) )

## Properties

Form	Liquid
Buffer	0.1M Tris, 0.1M Glycine, 20% Glycerol
Preservative	0.01% Thimerosal
Storage	Store as concentrated solution. Centrifuge briefly prior to opening vial. For short-term storage (1-2 weeks), store at 4°C. For long-term storage, aliquot and store at -20°C or below. Avoid multiple freeze-thaw cycles.
Concentration	0.93 mg/ml (Please refer to the vial label for the specific concentration.)
Immunogen	Recombinant protein encompassing a sequence within the center region of human ERR alpha. The exact sequence is proprietary.
Purification	Purified by antigen-affinity chromatography.
Conjugation	Unconjugated



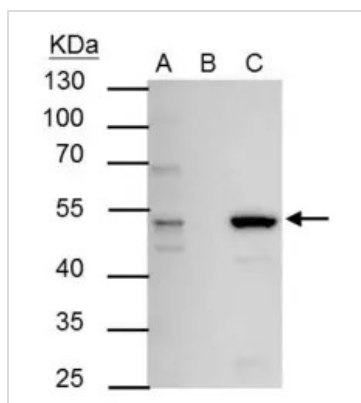
For full product information, images and publications, please visit our [website](#).

For laboratory research use only. Not for any clinical, therapeutic, or diagnostic use in humans or animals. Not for animal or human consumption.

## Note

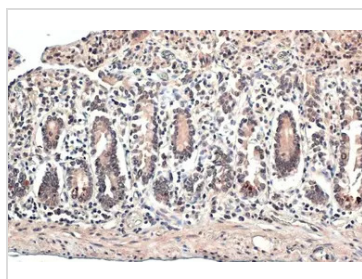
Purchasers shall not, and agree not to enable third parties to, analyze, copy, reverse engineer or otherwise attempt to determine the structure or sequence of the product.

## DATA IMAGES



### GTX106233 IP Image

ERR alpha antibody immunoprecipitates ERR alpha protein in IP experiments. IP Sample: 293T whole cell lysate/extract A : 30 µg whole cell lysate/extract of ERR alpha protein expressing 293T cells B : Control with 2.5 µg of pre-immune rabbit IgG C : Immunoprecipitation of ERR alpha by 2.5 µg of ERR alpha antibody (GTX106233) 10% SDS-PAGE The immunoprecipitated ERR alpha protein was detected by ERR alpha antibody (GTX106233) diluted at 1 : 1000. EasyBlot anti-rabbit IgG (HRP) (GTX221666-01) was used as a secondary reagent.



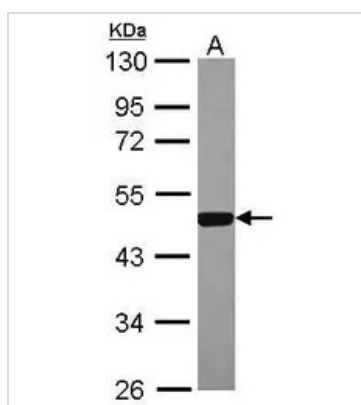
### GTX106233 IHC-P Image

ERR alpha antibody [N1C3] detects ERR alpha protein at cytoplasm and nucleus by immunohistochemical analysis.

Sample: Paraffin-embedded human intestine.

ERR alpha stained by ERR alpha antibody [N1C3] (GTX106233) diluted at 1:500.

Antigen Retrieval: Citrate buffer, pH 6.0, 15 min



### GTX106233 WB Image

Sample (30 ug of whole cell lysate)

A: 293T

10% SDS PAGE

GTX106233 diluted at 1:2000



For full product information, images and publications, please visit our [website](https://www.genetex.com).