

CD2AP antibody

Cat. No. GTX106235

Host	Rabbit
Clonality	Polyclonal
Isotype	IgG
Application	WB, ICC/IF, IHC-P
Reactivity	Human, Mouse, Rat

Reference (1)
 Package
 100 µl, 25 µl

APPLICATION

Application Note

*Optimal dilutions/concentrations should be determined by the researcher.

Suggested dilution	Recommended dilution
WB	1:500-1:3000
ICC/IF	1:100-1:1000
IHC-P	1:100-1:1000

Not tested in other applications.

Calculated MW 71 kDa. ([Note](#))

PROPERTIES

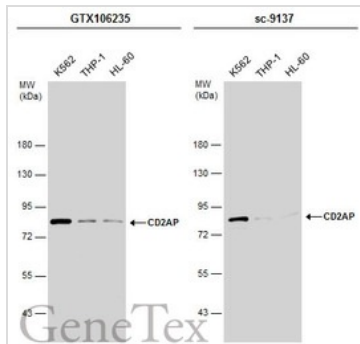
Form	Liquid
Buffer	PBS, 1% BSA, 20% Glycerol
Preservative	0.025% ProClin 300
Storage	Store as concentrated solution. Centrifuge briefly prior to opening vial. For short-term storage (1-2 weeks), store at 4°C. For long-term storage, aliquot and store at -20°C or below. Avoid multiple freeze-thaw cycles.
Concentration	0.17 mg/ml (Please refer to the vial label for the specific concentration.)
Immunogen	Recombinant protein encompassing a sequence within the center region of human CD2AP. The exact sequence is proprietary.
Purification	Purified by antigen-affinity chromatography.
Conjugation	Unconjugated

Note For laboratory research use only. Not for any clinical, therapeutic, or diagnostic use in humans or animals. Not for animal or human consumption.

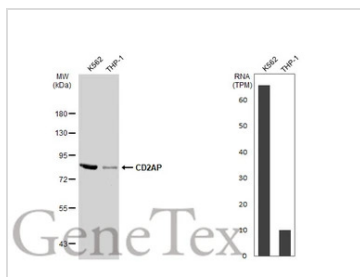
Purchasers shall not, and agree not to enable third parties to, analyze, copy, reverse engineer or otherwise attempt to determine the structure or sequence of the product.



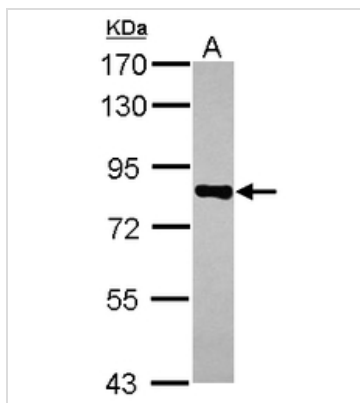
For full product information, images and publications, please visit our [website](#).

DATA IMAGES

GTX106235 WB Image

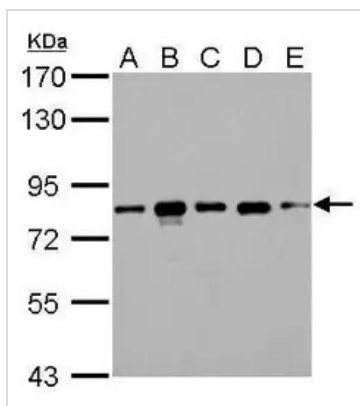
Various whole cell extracts (30 μ g) were separated by 7.5% SDS-PAGE, and the membranes were blotted with CD2AP antibody (GTX106235) diluted at 1:1000 and competitor's antibody (sc-9137) diluted at 1:200. The HRP-conjugated anti-rabbit IgG antibody (GTX213110-01) was used to detect the primary antibody.
*The competitor is not affiliated with GeneTex and does not endorse this product.


GTX106235 WB Image

Various whole cell extracts (30 μ g) were separated by 7.5% SDS-PAGE, and the membrane was blotted with CD2AP antibody (GTX106235) diluted at 1:1000. The HRP-conjugated anti-rabbit IgG antibody (GTX213110-01) was used to detect the primary antibody. Corresponding RNA expression data for the same cell lines are based on Human Protein Atlas program.


GTX106235 WB Image

Sample (30 μ g of whole cell lysate)
A: A431
7.5% SDS PAGE
GTX106235 diluted at 1:1000


GTX106235 WB Image

CD2AP antibody detects CD2AP protein by western blot analysis.

- A. 30 μ g 293T whole cell lysate/extract
- B. 30 μ g A431 whole cell lysate/extract
- C. 30 μ g HeLa whole cell lysate/extract
- D. 30 μ g HepG2 whole cell lysate/extract
- E. 30 μ g A375 whole cell lysate/extract

7.5% SDS-PAGE

CD2AP antibody (GTX106235) dilution: 1:1000

The HRP-conjugated anti-rabbit IgG antibody (GTX213110-01) was used to detect the primary antibody.



For full product information, images and publications, please visit our [website](https://www.genetex.com).