

STAT4 antibody

Cat. No. GTX10630

Host	Rabbit
Clonality	Polyclonal
Isotype	IgG
Application	WB, FACS, IP, ELISA, ChIP assay, Gel supershift assays
Reactivity	Human, Mouse, Rat

Reference (1)
Package
50 µg

APPLICATION

Application Note

*Optimal dilutions/concentrations should be determined by the researcher.

Suggested dilution	Recommended dilution
WB	Assay dependent
FACS	Assay dependent
IP	Assay dependent
ELISA	Assay dependent
ChIP assay	Assay dependent
Gel supershift assays	Assay dependent

Not tested in other applications.

Calculated MW 86 kDa. ([Note](#))

Product Note Does not cross react with other STAT proteins

PROPERTIES

Form	Liquid
Buffer	PBS
Preservative	0.1% Sodium azide
Storage	Store as concentrated solution. Centrifuge briefly prior to opening vial. For short-term storage (1-2 weeks), store at 4°C. For long-term storage, aliquot and store at -20°C or below. Avoid multiple freeze-thaw cycles.
Concentration	0.25 mg/ml (Please refer to the vial label for the specific concentration.)
Immunogen	A synthetic peptide derived from the extreme carboxy-terminus of murine STAT4.
Purification	Purified by antigen-affinity chromatography
Conjugation	Unconjugated



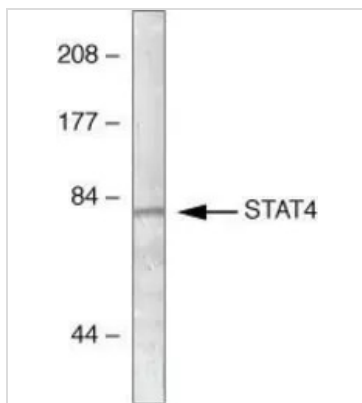
For full product information, images and publications, please visit our [website](#).

For laboratory research use only. Not for any clinical, therapeutic, or diagnostic use in humans or animals. Not for animal or human consumption.

Note

Purchasers shall not, and agree not to enable third parties to, analyze, copy, reverse engineer or otherwise attempt to determine the structure or sequence of the product.

DATA IMAGES



GTX10630 WB Image

WB analysis of mouse testis homogenates using GTX10630 STAT4 antibody.



For full product information, images and publications, please visit our [website](#).