

## CBP80 antibody [N2], N-term

Cat. No. GTX106328

Host	Rabbit
Clonality	Polyclonal
Isotype	IgG
Applications	WB, ICC/IF, IHC-P
Reactivity	Human

Package  
100 µl, 25 µl

## Applications

## Application Note

\*Optimal dilutions/concentrations should be determined by the researcher.

Suggested dilution	Recommended dilution
WB	1:500-1:3000
ICC/IF	1:100-1:1000
IHC-P	1:100-1:1000

Not tested in other applications.

Calculated MW 92 kDa. ( [Note](#) )

## Properties

Form	Liquid
Buffer	0.1M Tris, 0.1M Glycine, 10% Glycerol
Preservative	0.01% Thimerosal
Storage	Store as concentrated solution. Centrifuge briefly prior to opening vial. For short-term storage (1-2 weeks), store at 4°C. For long-term storage, aliquot and store at -20°C or below. Avoid multiple freeze-thaw cycles.
Concentration	1 mg/ml (Please refer to the vial label for the specific concentration.)
Immunogen	Carrier-protein conjugated synthetic peptide encompassing a sequence within the N-terminus region of human CBP80. The exact sequence is proprietary.
Purification	Purified by antigen-affinity chromatography.
Conjugation	Unconjugated

## Note

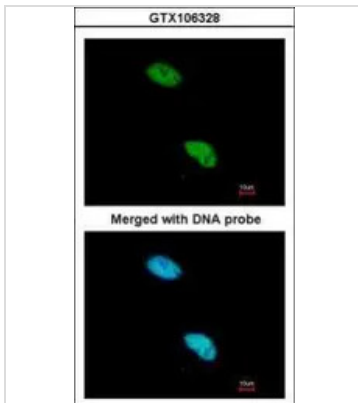
For laboratory research use only. Not for any clinical, therapeutic, or diagnostic use in humans or animals. Not for animal or human consumption.

Purchasers shall not, and agree not to enable third parties to, analyze, copy, reverse engineer or otherwise attempt to determine the structure or sequence of the product.

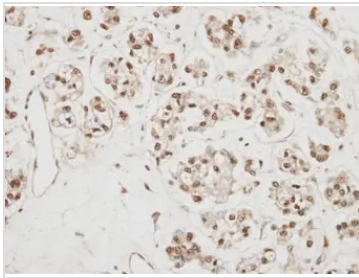


For full product information, images and publications, please visit our [website](#).

Date 2026 / 01 / 01 Page 1 of 2

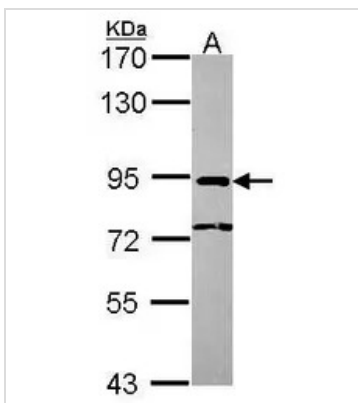
**DATA IMAGES**

**GTx106328 ICC/IF Image**

Immunofluorescence analysis of paraformaldehyde-fixed HeLa, using CBP80 (GTx106328) antibody at 1:200 dilution.


**GTx106328 IHC-P Image**

Immunohistochemical analysis of paraffin-embedded OVCA xenograft, using NCBP1(GTx106328) antibody at 1:500 dilution.

Antigen Retrieval: Trilogy™ (EDTA based, pH 8.0) buffer, 15min


**GTx106328 WB Image**

Sample (30 ug of whole cell lysate)

A: A431 (GTx27909)

7.5% SDS PAGE

GTx106328 diluted at 1:2000



For full product information, images and publications, please visit our [website](https://www.genetex.com).