

TAF172 antibody [C3], C-term

Cat. No. GTX106359

Host	Rabbit
Clonality	Polyclonal
Isotype	IgG
Applications	WB, IP
Reactivity	Human

Package
100 µl, 25 µl

Applications

Application Note

*Optimal dilutions/concentrations should be determined by the researcher.

Suggested dilution	Recommended dilution
WB	1:500-1:3000
IP	1:100-1:500

Not tested in other applications.

Calculated MW 207 kDa. ([Note](#))

Properties

Form	Liquid
Buffer	0.1M Tris, 0.1M Glycine, 10% Glycerol
Preservative	0.01% Thimerosal
Storage	Store as concentrated solution. Centrifuge briefly prior to opening vial. For short-term storage (1-2 weeks), store at 4°C. For long-term storage, aliquot and store at -20°C or below. Avoid multiple freeze-thaw cycles.
Concentration	1 mg/ml (Please refer to the vial label for the specific concentration.)
Immunogen	Carrier-protein conjugated synthetic peptide encompassing a sequence within the C-terminus region of human TAF172. The exact sequence is proprietary.
Purification	Purified by antigen-affinity chromatography.
Conjugation	Unconjugated

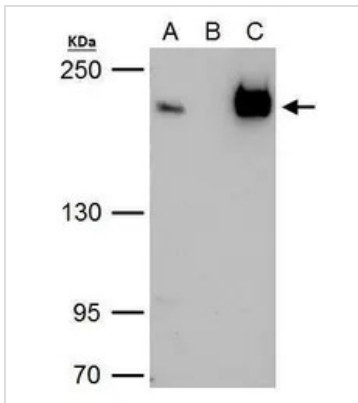
Note

For laboratory research use only. Not for any clinical, therapeutic, or diagnostic use in humans or animals. Not for animal or human consumption.

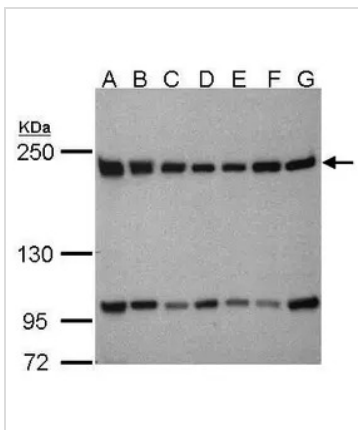
Purchasers shall not, and agree not to enable third parties to, analyze, copy, reverse engineer or otherwise attempt to determine the structure or sequence of the product.



For full product information, images and publications, please visit our [website](#).

DATA IMAGES

GTx106359 IP Image

TAF172 antibody immunoprecipitates TAF172 protein in IP experiments. IP Sample: 293T whole cell lysate/extract A. 40 μ g 293T whole cell lysate/extract B. Control with 2 μ g of preimmune rabbit IgG C. Immunoprecipitation of TAF172 protein by 2 μ g of TAF172 antibody (GTx106359) 5% SDS-PAGE The immunoprecipitated TAF172 protein was detected by TAF172 antibody (GTx106359) diluted at 1:1000. EasyBlot anti-rabbit IgG (GTx221666-01) was used as a secondary reagent.


GTx106359 WB Image

Sample(30 μ g whole cell lysate)

A: 293T

B: A431 (GTx27909)

C: H1299

D: HeLa S3 (GTx14654)

E: Hep G2 (GTx27900)

F: MOLT4 (GTx27912)

G: Raji (GTx27908)

5% SDS PAGE

GTx106359 diluted at 1:1000



For full product information, images and publications, please visit our [website](https://www.genetex.com).