

Importin 7 antibody [C3], C-term

Cat. No. GTX106408

Host	Rabbit
Clonality	Polyclonal
Isotype	IgG
Application	WB, ICC/IF, IHC-P
Reactivity	Human

Reference (3)

Package

100 µl, 25 µl

APPLICATION

Application Note

*Optimal dilutions/concentrations should be determined by the researcher.

Suggested dilution	Recommended dilution
WB	1:500-1:3000
ICC/IF	1:100-1:1000
IHC-P	1:100-1:1000

Not tested in other applications.

Calculated MW 120 kDa. ([Note](#))

Product Note Knockdown/Knockout validation was supported by references (PMID:25999477)

PROPERTIES

Form	Liquid
Buffer	PBS, 10% Glycerol
Preservative	0.01% Thimerosal
Storage	Store as concentrated solution. Centrifuge briefly prior to opening vial. For short-term storage (1-2 weeks), store at 4°C. For long-term storage, aliquot and store at -20°C or below. Avoid multiple freeze-thaw cycles.
Concentration	1 mg/ml (Please refer to the vial label for the specific concentration.)
Immunogen	Carrier-protein conjugated synthetic peptide encompassing a sequence within the C-terminus region of human Importin 7. The exact sequence is proprietary.
Purification	Purified by antigen-affinity chromatography.
Conjugation	Unconjugated



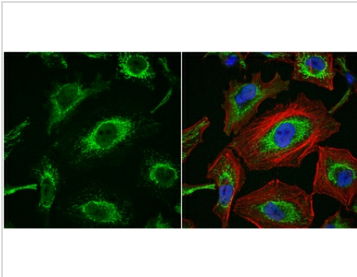
For full product information, images and publications, please visit our [website](#).

For laboratory research use only. Not for any clinical, therapeutic, or diagnostic use in humans or animals. Not for animal or human consumption.

Note

Purchasers shall not, and agree not to enable third parties to, analyze, copy, reverse engineer or otherwise attempt to determine the structure or sequence of the product.

DATA IMAGES



GTXT106408 ICC/IF Image

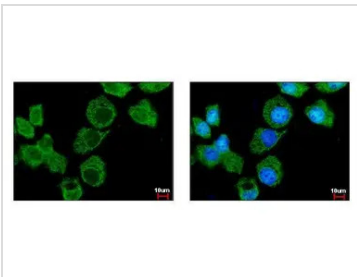
Importin 7 antibody [C3], C-term detects Importin 7 protein at cytoplasm by immunofluorescent analysis.

Sample: HeLa cells were fixed in 4% paraformaldehyde at RT for 15 min.

Green: Importin 7 protein stained by Importin 7 antibody [C3], C-term (GTXT106408) diluted at 1:200.

Red: phalloidin, a cytoskeleton marker, stained by phalloidin (invitrogen, A12380) diluted at 1:200.

Blue: Hoechst 33342 staining.



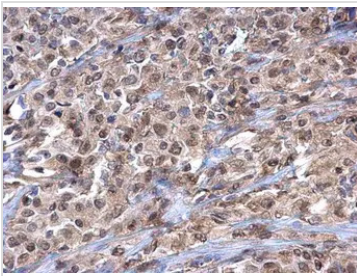
GTXT106408 ICC/IF Image

Importin 7 antibody [C3], C-term detects IPO7 protein at cytoplasm by immunofluorescent analysis.

Sample: A431 cells were fixed in 4% paraformaldehyde at RT for 15 min.

Green: IPO7 protein stained by Importin 7 antibody [C3], C-term (GTXT106408) diluted at 1:500.

Blue: Hoechst 33343 staining.



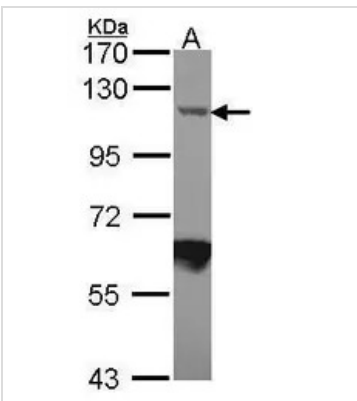
GTXT106408 IHC-P Image

Importin 7 antibody [C3], C-term detects Importin 7 protein at cytoplasm and nucleus on human ovarian carcinoma by immunohistochemical analysis.

Sample: Paraffin-embedded human ovarian carcinoma.

Importin 7 antibody [C3], C-term (GTXT106408) diluted at 1:500.

Antigen Retrieval: Trilogy™ (EDTA based, pH 8.0) buffer, 15min



GTXT106408 WB Image

Sample (30 ug of whole cell lysate)

A: JurKat

7.5% SDS PAGE

GTXT106408 diluted at 1:1000



For full product information, images and publications, please visit our [website](https://www.genetex.com).