

## CBX1 / HP1 beta antibody

Cat. No. GTX106418

<b>Host</b>	Rabbit
<b>Clonality</b>	Polyclonal
<b>Isotype</b>	IgG
<b>Applications</b>	WB, ICC/IF, IHC-P
<b>Reactivity</b>	Human, Mouse

References ( 3 )

Package

100 µl, 25 µl

## Applications

## Application Note

\*Optimal dilutions/concentrations should be determined by the researcher.

Suggested dilution	Recommended dilution
WB	1:500-1:3000
ICC/IF	1:100-1:1000
IHC-P	1:100-1:1000

Not tested in other applications.

**Calculated MW** 21 kDa. ( [Note](#) )

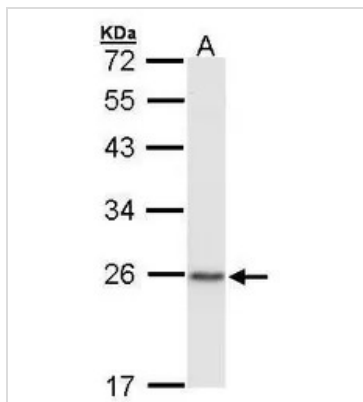
## Properties

<b>Form</b>	Liquid
<b>Buffer</b>	0.1M Tris, 0.1M Glycine, 10% Glycerol
<b>Preservative</b>	0.01% Thimerosal
<b>Storage</b>	Store as concentrated solution. Centrifuge briefly prior to opening vial. For short-term storage (1-2 weeks), store at 4°C. For long-term storage, aliquot and store at -20°C or below. Avoid multiple freeze-thaw cycles.
<b>Concentration</b>	1 mg/ml (Please refer to the vial label for the specific concentration.)
<b>Immunogen</b>	Carrier-protein conjugated synthetic peptide encompassing a sequence within the center region of human CBX1 / HP1 beta. The exact sequence is proprietary.
<b>Purification</b>	Purified by antigen-affinity chromatography.
<b>Conjugation</b>	Unconjugated
<b>Note</b>	For laboratory research use only. Not for any clinical, therapeutic, or diagnostic use in humans or animals. Not for animal or human consumption.  Purchasers shall not, and agree not to enable third parties to, analyze, copy, reverse engineer or otherwise attempt to determine the structure or sequence of the product.



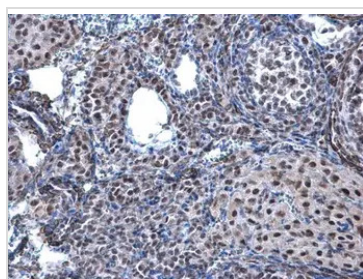
For full product information, images and publications, please visit our [website](#).

DATA IMAGES



**GTX106418 WB Image**

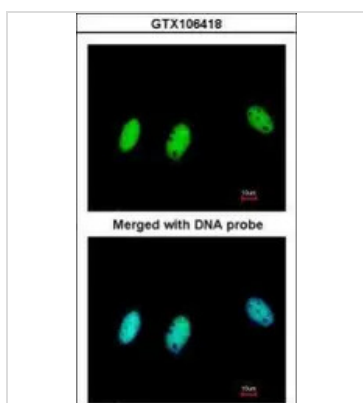
Sample (30 ug of whole cell lysate)  
 A: Raji  
 12% SDS PAGE  
 GTX106418 diluted at 1:1000



**GTX106418 IHC-P Image**

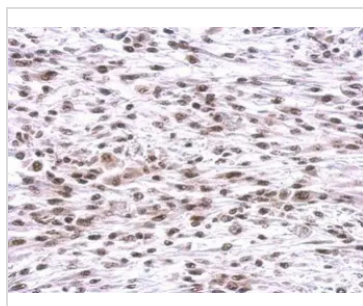
CBX1 / HP1 beta antibody detects CBX1 / HP1 beta protein at nucleus on mouse ovary by immunohistochemical analysis.  
 Sample: Paraffin-embedded mouse ovary.  
 CBX1 / HP1 beta antibody (GTX106418) diluted at 1:500.

Antigen Retrieval: Trilogy™ (EDTA based, pH 8.0) buffer, 15min



**GTX106418 ICC/IF Image**

Immunofluorescence analysis of paraformaldehyde-fixed HeLa, using HP1-beta(GTX106418) antibody at 1:200 dilution.



**GTX106418 IHC-P Image**

CBX1 / HP1 beta antibody detects CBX1 protein at nucleus on C2C12 xenograft by immunohistochemical analysis.  
 Sample: Paraffin-embedded C2C12 xenograft.  
 CBX1 / HP1 beta antibody (GTX106418) dilution: 1:500.

Antigen Retrieval: Trilogy™ (EDTA based, pH 8.0) buffer, 15min



For full product information, images and publications, please visit our [website](#).