

## FGFR1 antibody

Cat. No. GTX10646

Host	Rabbit
Clonality	Polyclonal
Isotype	IgG
Applications	WB, ICC/IF, IHC-P, IP
Reactivity	Human

Package  
100 µl

## Applications

## Application Note

\*Optimal dilutions/concentrations should be determined by the researcher.

Suggested dilution	Recommended dilution
WB	1:400
ICC/IF	Assay dependent
IHC-P	1:200
IP	Assay dependent

Not tested in other applications.

Calculated MW 92 kDa. ( [Note](#) )

## Product Note

Anti-Fibroblast Growth Factor Receptor-1 (FGFR-1) is developed in rabbit using a synthetic peptide Glu-AlaLeu-Glu-Glu-Arg-Pro-Ala-Val-Met-Thr-Ser-Pro-Leu-Lys conjugated to KLH with glutaraldehyde as immunogen. The peptide corresponds to amino acid residues 360-373 of the extracellular region of human FGFR-1 with a C-terminally added lysine. Staining of the product is specifically inhibited with the FGFR-1 immunizing peptide. No reaction with human FGFR-2 and FGFR-3 is detected.

## Properties

Form	Liquid
Buffer	PBS, 1% BSA
Preservative	15mM Sodium azide
Storage	Store as concentrated solution. Centrifuge briefly prior to opening vial. For short-term storage (1-2 weeks), store at 4°C. For long-term storage, aliquot and store at -20°C or below. Avoid multiple freeze-thaw cycles.
Concentration	~1 mg/ml (Please refer to the vial label for the specific concentration.)
Immunogen	Synthetic peptide corresponding to amino acid residues 360-373 of the extracellular region of human FGFR-1 conjugated to KLH with glutaraldehyde, and with a C-terminally added lysine.
Purification	Purified by affinity chromatography



For full product information, images and publications, please visit our [website](#).

Date 2025 / 12 / 28 Page 1 of 2

## Conjugation

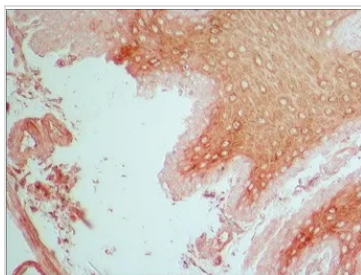
Unconjugated

## Note

For laboratory research use only. Not for any clinical, therapeutic, or diagnostic use in humans or animals. Not for animal or human consumption.

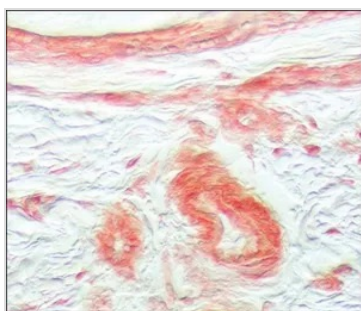
Purchasers shall not, and agree not to enable third parties to, analyze, copy, reverse engineer or otherwise attempt to determine the structure or sequence of the product.

## DATA IMAGES



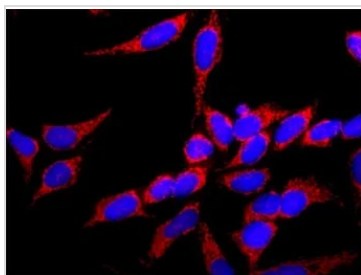
### GTx10646 IHC-P Image

IHC-P analysis of human umbilical cord sections using GTx10646 FGFR1 antibody at 5 µg/mL.



### GTx10646 IHC-P Image

IHC-P analysis of human umbilical cord section using GTx10646 FGFR1 antibody at 5 µg/mL.



### GTx10646 ICC/IF Image

ICC/IF analysis of HeLa cells using GTx10646 FGFR1 antibody at 1:100(red) with DAPI(blue). Cells were fixed and permeabilized methanol followed by methanol:acetone.



For full product information, images and publications, please visit our [website](#).