

FGFR2 antibody

Cat. No. GTX10648

Host	Rabbit
Clonality	Polyclonal
Isotype	IgG
Applications	WB, ICC/IF, IHC-P
Reactivity	Human, Mouse

References (2)

Package

50 µl

Applications

Application Note

*Optimal dilutions/concentrations should be determined by the researcher.

Suggested dilution	Recommended dilution
WB	1:2,000
ICC/IF	Assay dependent
IHC-P	1:1,000

Not tested in other applications.

Calculated MW 92 kDa. ([Note](#))

Product Note Solution in 0.01 M phosphate buffered saline, pH 7.4, containing 1% bovine serum albumin and 15 mM sodium azide

Properties

Form	Liquid
Buffer	PBS, 1% BSA
Preservative	15mM Sodium azide
Storage	Store as concentrated solution. Centrifuge briefly prior to opening vial. For short-term storage (1-2 weeks), store at 4°C. For long-term storage, aliquot and store at -20°C or below. Avoid multiple freeze-thaw cycles.
Concentration	Batch dependent (Please refer to the vial label for the specific concentration.)
Immunogen	synthetic peptide corresponding to amino acids 362-374 of the extracellular region of human FGFR-2 (Bek).
Purification	Purified by affinity chromatography
Conjugation	Unconjugated



For full product information, images and publications, please visit our [website](#).

Date 2025 / 12 / 12 Page 1 of 2

For laboratory research use only. Not for any clinical, therapeutic, or diagnostic use in humans or animals. Not for animal or human consumption.

Note

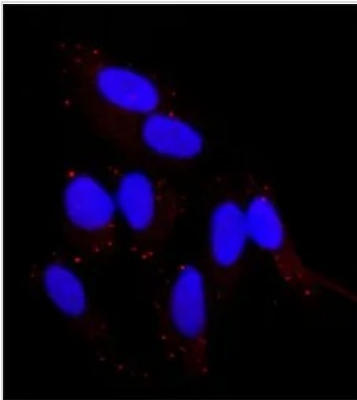
Purchasers shall not, and agree not to enable third parties to, analyze, copy, reverse engineer or otherwise attempt to determine the structure or sequence of the product.

DATA IMAGES



GTX10648 IHC-P Image

IHC-P analysis of human heart tissue using GTX10648 FGFR2 antibody at 1:500.



GTX10648 ICC/IF Image

ICC/IF analysis of HeLa cells using GTX10648 FGFR2 antibody at 1:500(red) with DAPI(blue). Cells were fixed and permeabilized with methanol followed by methanol:acetone.



For full product information, images and publications, please visit our [website](#).