

EIF2 beta antibody

Cat. No. GTX106484

Host	Rabbit
Clonality	Polyclonal
Isotype	IgG
Application	WB, ICC/IF, IHC-P, IP
Reactivity	Human, Mouse, Rat

Reference (3)
 Package
 100 µl, 25 µl

APPLICATION

Application Note

*Optimal dilutions/concentrations should be determined by the researcher.

Suggested dilution	Recommended dilution
WB	1:500-1:3000
ICC/IF	1:100-1:1000
IHC-P	1:100-1:1000
IP	Assay dependent

Not tested in other applications.

Calculated MW 38 kDa. ([Note](#))

Product Note Knockdown/Knockout validation was supported by references (PMID:26990993)

PROPERTIES

Form	Liquid
Buffer	0.1M Tris, 0.1M Glycine, 10% Glycerol
Preservative	0.01% Thimerosal
Storage	Store as concentrated solution. Centrifuge briefly prior to opening vial. For short-term storage (1-2 weeks), store at 4°C. For long-term storage, aliquot and store at -20°C or below. Avoid multiple freeze-thaw cycles.
Concentration	1 mg/ml (Please refer to the vial label for the specific concentration.)
Immunogen	Recombinant protein encompassing a sequence within the center region of human EIF2 beta. The exact sequence is proprietary.
Purification	Purified by antigen-affinity chromatography.
Conjugation	Unconjugated



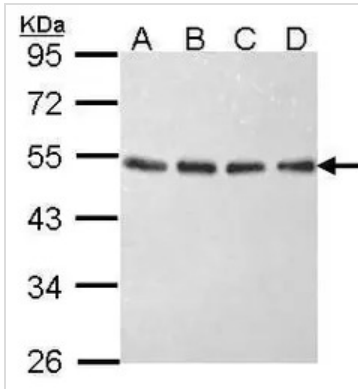
For full product information, images and publications, please visit our [website](#).

For laboratory research use only. Not for any clinical, therapeutic, or diagnostic use in humans or animals. Not for animal or human consumption.

Note

Purchasers shall not, and agree not to enable third parties to, analyze, copy, reverse engineer or otherwise attempt to determine the structure or sequence of the product.

DATA IMAGES



GTX106484 WB Image

Sample (30 ug of whole cell lysate)

A: 293T

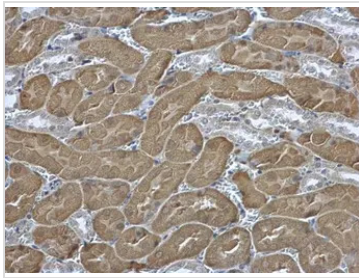
B: A431 (GTX27909)

C: H1299

D: Hela

10% SDS PAGE

GTX106484 diluted at 1:1000



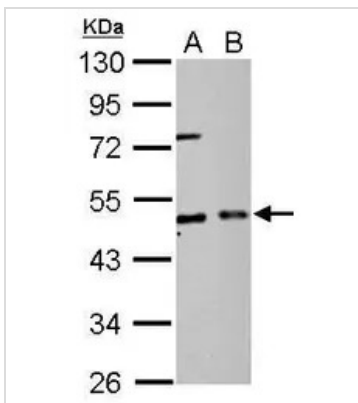
GTX106484 IHC-P Image

EIF2 beta antibody detects EIF2 beta protein at cytoplasm in mouse kidney by immunohistochemical analysis.

Sample: Paraffin-embedded mouse kidney.

EIF2 beta antibody (GTX106484) diluted at 1:500.

Antigen Retrieval: Citrate buffer, pH 6.0, 15 min



GTX106484 WB Image

EIF2 beta antibody detects EIF2S2 protein by Western blot analysis.

A. 30 µg PC-12 whole cell lysate/extract

B. 30 ug Rat2 whole cell lysate/extract

10 % SDS-PAGE

EIF2 beta antibody (GTX106484) dilution: 1:2000



For full product information, images and publications, please visit our [website](https://www.genetex.com).