

EEF1B2 antibody [N1C3]

Cat. No. GTX106535

Host	Rabbit
Clonality	Polyclonal
Isotype	IgG
Applications	WB, ICC/IF, IHC-P
Reactivity	Human, Mouse

Package
100 µl, 25 µl

Applications

Application Note

*Optimal dilutions/concentrations should be determined by the researcher.

Suggested dilution	Recommended dilution
WB	1:1000-1:10000
ICC/IF	1:100-1:1000
IHC-P	1:100-1:1000

Not tested in other applications.

Calculated MW 25 kDa. ([Note](#))

Properties

Form	Liquid
Buffer	0.1M Tris, 0.1M Glycine, 10% Glycerol
Preservative	0.01% Thimerosal
Storage	Store as concentrated solution. Centrifuge briefly prior to opening vial. For short-term storage (1-2 weeks), store at 4°C. For long-term storage, aliquot and store at -20°C or below. Avoid multiple freeze-thaw cycles.
Concentration	1 mg/ml (Please refer to the vial label for the specific concentration.)
Immunogen	Recombinant protein encompassing a sequence within the center region of human EEF1B2. The exact sequence is proprietary.
Purification	Purified by antigen-affinity chromatography.
Conjugation	Unconjugated

Note

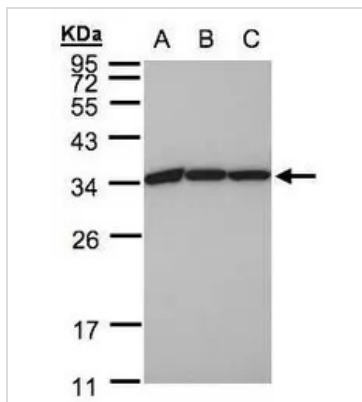
For laboratory research use only. Not for any clinical, therapeutic, or diagnostic use in humans or animals. Not for animal or human consumption.

Purchasers shall not, and agree not to enable third parties to, analyze, copy, reverse engineer or otherwise attempt to determine the structure or sequence of the product.



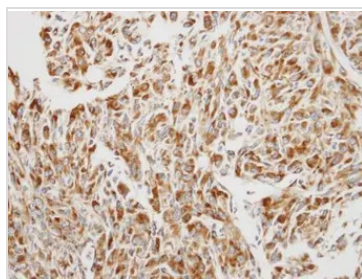
For full product information, images and publications, please visit our [website](#).

DATA IMAGES



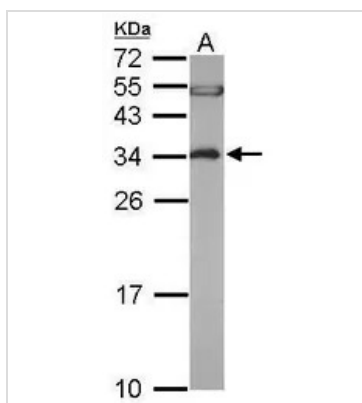
GTX106535 WB Image

Sample(30 ug whole cell lysate)
 A:A431(GTX27909)
 B:H1299
 C:HeLa S3(GTX14654)
 12% SDS PAGE
 GTX106535 diluted at 1:1000



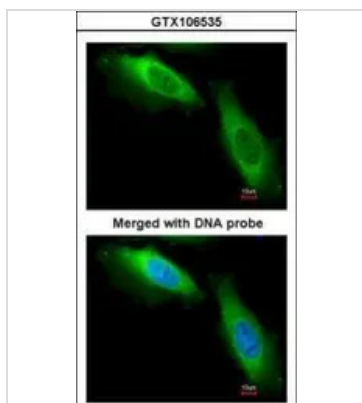
GTX106535 IHC-P Image

Immunohistochemical analysis of paraffin-embedded U87 xenograft, using EEF1B2(GTX106535) antibody at 1:250 dilution.
 Antigen Retrieval: Trilogy™ (EDTA based, pH 8.0) buffer, 15min



GTX106535 WB Image

Sample (50 ug of whole cell lysate)
 A: mouse brain
 12% SDS PAGE
 GTX106535 diluted at 1:5000



GTX106535 ICC/IF Image

Immunofluorescence analysis of paraformaldehyde-fixed HeLa, using EF-1-beta2(GTX106535) antibody at 1:200 dilution.



For full product information, images and publications, please visit our [website](#).