

## p23 antibody [N1C3]

**Cat. No. GTX106550**

<b>Host</b>	Rabbit
<b>Clonality</b>	Polyclonal
<b>Isotype</b>	IgG
<b>Application</b>	WB, IHC-P
<b>Reactivity</b>	Human, Mouse

**Package**  
100 µl, 25 µl

### APPLICATION

#### Application Note

\*Optimal dilutions/concentrations should be determined by the researcher.

Suggested dilution	Recommended dilution
WB	1:500-1:20000
IHC-P	1:100-1:1000

Not tested in other applications.

**Calculated MW** 19 kDa. ( [Note](#) )

### PROPERTIES

<b>Form</b>	Liquid
<b>Buffer</b>	PBS, 1% BSA, 20% Glycerol
<b>Preservative</b>	0.01% Thimerosal
<b>Storage</b>	Store as concentrated solution. Centrifuge briefly prior to opening vial. For short-term storage (1-2 weeks), store at 4°C. For long-term storage, aliquot and store at -20°C or below. Avoid multiple freeze-thaw cycles.
<b>Concentration</b>	1 mg/ml (Please refer to the vial label for the specific concentration.)
<b>Immunogen</b>	Recombinant protein encompassing a sequence within the center region of human p23. The exact sequence is proprietary.
<b>Purification</b>	Purified by antigen-affinity chromatography.
<b>Conjugation</b>	Unconjugated

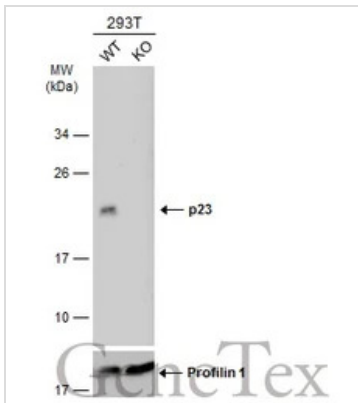
#### Note

For laboratory research use only. Not for any clinical, therapeutic, or diagnostic use in humans or animals. Not for animal or human consumption.

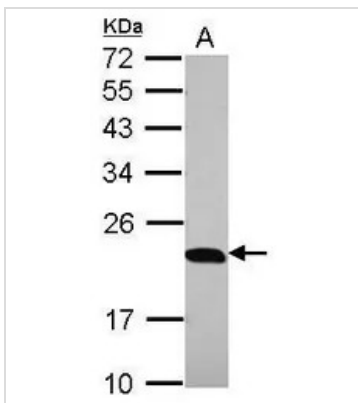
Purchasers shall not, and agree not to enable third parties to, analyze, copy, reverse engineer or otherwise attempt to determine the structure or sequence of the product.



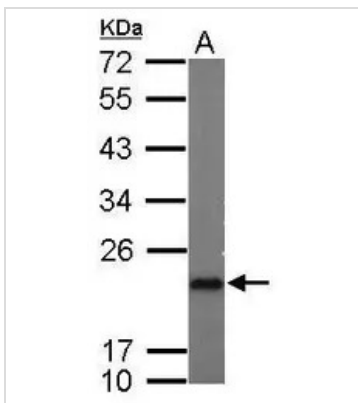
For full product information, images and publications, please visit our [website](#).

**DATA IMAGES**

**GTX106550 WB Image**

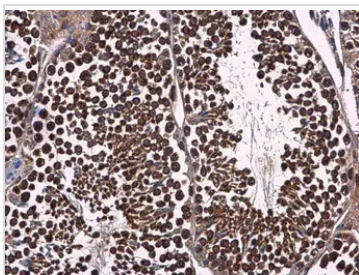
Wild-type (WT) and p23 knockout (KO) 293T cell extracts (30 µg) were separated by 12% SDS-PAGE, and the membrane was blotted with p23 antibody [N1C3] (GTX106550) diluted at 1:1000. The HRP-conjugated anti-rabbit IgG antibody (GTX213110-01) was used to detect the primary antibody.


**GTX106550 WB Image**

Sample (30 ug of whole cell lysate)  
A: 293T  
12% SDS PAGE  
GTX106550 diluted at 1:10000


**GTX106550 WB Image**

Sample (50 ug of whole cell lysate)  
A: mouse brain  
12% SDS PAGE  
GTX106550 diluted at 1:5000


**GTX106550 IHC-P Image**

p23 antibody [N1C3] detects p23 protein at cytoplasm in mouse testis by immunohistochemical analysis.  
Sample: Paraffin-embedded mouse testis.  
p23 antibody [N1C3] (GTX106550) diluted at 1:500.

Antigen Retrieval: Citrate buffer, pH 6.0, 15 min



For full product information, images and publications, please visit our [website](https://www.genetex.com).