

Staufen antibody

Cat. No. GTX106566

Host	Rabbit
Clonality	Polyclonal
Isotype	IgG
Application	WB, ICC/IF, IP
Reactivity	Human, Mouse

Reference (2)
 Package
 100 µl, 25 µl

APPLICATION

Application Note

*Optimal dilutions/concentrations should be determined by the researcher.

Suggested dilution	Recommended dilution
WB	1:500-1:3000
ICC/IF	1:100-1:1000
IP	1:500-1:3000

Not tested in other applications.

Calculated MW	63 kDa. (Note)
Product Note	Knockdown/Knockout validation was supported by references (PMID:26990993)

PROPERTIES

Form	Liquid
Buffer	PBS, 20% Glycerol
Preservative	0.025% ProClin 300
Storage	Store as concentrated solution. Centrifuge briefly prior to opening vial. For short-term storage (1-2 weeks), store at 4°C. For long-term storage, aliquot and store at -20°C or below. Avoid multiple freeze-thaw cycles.
Concentration	0.93 mg/ml (Please refer to the vial label for the specific concentration.)
Immunogen	Recombinant protein encompassing a sequence within the C-terminus region of human Staufen. The exact sequence is proprietary.
Purification	Purified by antigen-affinity chromatography.
Conjugation	Unconjugated

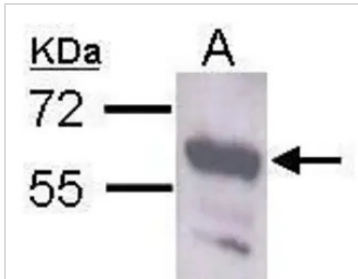


For full product information, images and publications, please visit our [website](#).

For laboratory research use only. Not for any clinical, therapeutic, or diagnostic use in humans or animals. Not for animal or human consumption.

Note

Purchasers shall not, and agree not to enable third parties to, analyze, copy, reverse engineer or otherwise attempt to determine the structure or sequence of the product.

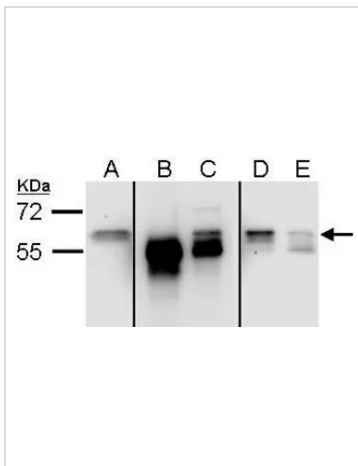
DATA IMAGES

GTX106566 WB Image

Sample (30 µg of whole cell lysate)

A: Neuro2A

GTX106566 diluted at 1:1000

The HRP-conjugated anti-rabbit IgG antibody (GTX213110-01) was used to detect the primary antibody.


GTX106566 IP Image

Sample (µg of whole cell lysate)

A: 293 (input)

B: control rabbit IgG-IP

C: Stau1-IP (GTX106566)

D: Post-IP lysate from control rabbit IgG-IP

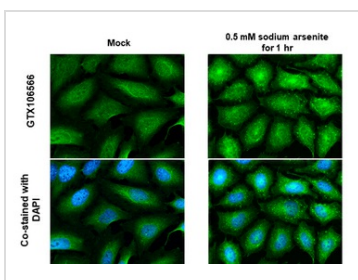
E: Post-IP lysate from Stau1-IP

7.5% SDS PAGE

GTX106566 diluted at 1:3000

Image courtesy of Dr. Samantha Whitman (Laboratory of Dr. Donna Zhang, U of Arizona Pharmacology & Toxicology Department).

The HRP-conjugated anti-rabbit IgG antibody (GTX213110-01) was used to detect the primary antibody.


GTX106566 ICC/IF Image

Staufen antibody detects Staufen protein by immunofluorescent analysis.

Sample: Mock and treated HeLa cells were fixed in 4% paraformaldehyde at RT for 15 min.

Green: Staufen stained by Staufen antibody (GTX106566) diluted at 1:500.

Blue: Fluoroshield with DAPI (GTX30920).



For full product information, images and publications, please visit our [website](https://www.genetex.com).