

HN1 antibody

Cat. No. GTX106585

| | |
|--------------------|------------------|
| Host | Rabbit |
| Clonality | Polyclonal |
| Isotype | IgG |
| Application | WB, IHC-P, ELISA |
| Reactivity | Human |

Reference (3)
 Package
 100 µl, 25 µl

APPLICATION

Application Note

*Optimal dilutions/concentrations should be determined by the researcher.

| Suggested dilution | Recommended dilution |
|--------------------|----------------------|
| WB | 1:500-1:3000 |
| IHC-P | Assay dependent |
| ELISA | 1:1000-1:10000 |

Not tested in other applications.

Calculated MW 16 kDa. ([Note](#))

PROPERTIES

| | |
|----------------------|--|
| Form | Liquid |
| Buffer | PBS, 20% Glycerol |
| Preservative | 0.025% ProClin 300 |
| Storage | Store as concentrated solution. Centrifuge briefly prior to opening vial. For short-term storage (1-2 weeks), store at 4°C. For long-term storage, aliquot and store at -20°C or below. Avoid multiple freeze-thaw cycles. |
| Concentration | 1.22 mg/ml (Please refer to the vial label for the specific concentration.) |
| Immunogen | Recombinant protein encompassing a sequence within the center region of human HN1. The exact sequence is proprietary. |
| Purification | Purified by antigen-affinity chromatography. |
| Conjugation | Unconjugated |

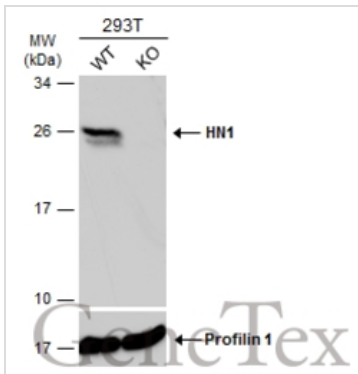
Note

For laboratory research use only. Not for any clinical, therapeutic, or diagnostic use in humans or animals. Not for animal or human consumption.

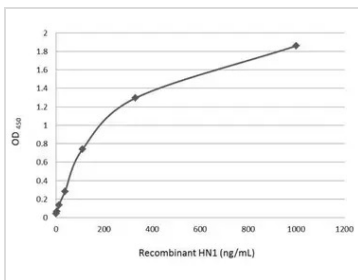
Purchasers shall not, and agree not to enable third parties to, analyze, copy, reverse engineer or otherwise attempt to determine the structure or sequence of the product.



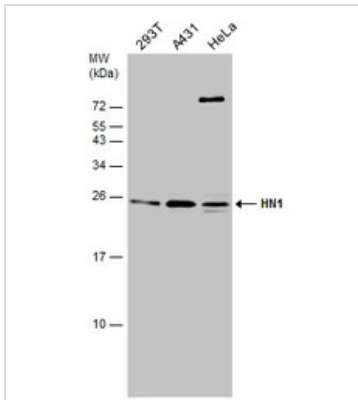
For full product information, images and publications, please visit our [website](#).

DATA IMAGES

GTX106585 WB Image

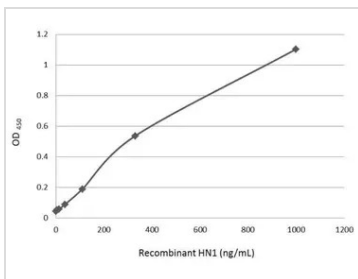
Wild-type (WT) and HN1 knockout (KO) 293T cell extracts (30 µg) were separated by 12% SDS-PAGE, and the membrane was blotted with HN1 antibody (GTX106585) diluted at 1:1000. The HRP-conjugated anti-rabbit IgG antibody (GTX213110-01) was used to detect the primary antibody.


GTX106585 ELISA Image

An ELISA plate is coated with 50 µL of HN1 recombinant protein at concentration ranged from 0.004 µg/mL to 1 µg/mL. The coated protein is detected with HN1 antibody (GTX106585) at 0.25 µg/mL.


GTX106585 WB Image

Various whole cell extracts (30 µg) were separated by 15% SDS-PAGE, and the membrane was blotted with HN1 antibody (GTX106585) diluted at 1:500. The HRP-conjugated anti-rabbit IgG antibody (GTX213110-01) was used to detect the primary antibody.


GTX106585 ELISA Image

An ELISA plate is coated with 50 µL of HN1 recombinant protein at concentration ranged from 0.004 µg/mL to 1 µg/mL. The coated protein is detected with HN1 antibody (GTX106585) at 0.25 µg/mL.



For full product information, images and publications, please visit our [website](https://www.genetex.com).