

# Nodal antibody

**Cat. No. GTX106644**

<b>Host</b>	Rabbit
<b>Clonality</b>	Polyclonal
<b>Isotype</b>	IgG
<b>Applications</b>	WB, IHC-P, ELISA, Sandwich ELISA
<b>Reactivity</b>	Human, Mouse, Rat

**Package**  
100 µl, 25 µl

## Applications

### Application Note

\*Optimal dilutions/concentrations should be determined by the researcher.

Suggested dilution	Recommended dilution
WB	1:500-1:3000
IHC-P	1:100-1:1000
ELISA	1:1000-1:10000
Sandwich ELISA	Assay dependent

**Note : Capture: GTX106644 , Detection: GTX88954**

Not tested in other applications.

**Calculated MW** 40 kDa. ( [Note](#) )

## Properties

<b>Form</b>	Liquid
<b>Buffer</b>	0.1M Tris, 0.1M Glycine, 10% Glycerol
<b>Preservative</b>	0.01% Thimerosal
<b>Storage</b>	Store as concentrated solution. Centrifuge briefly prior to opening vial. For short-term storage (1-2 weeks), store at 4°C. For long-term storage, aliquot and store at -20°C or below. Avoid multiple freeze-thaw cycles.
<b>Concentration</b>	1 mg/ml (Please refer to the vial label for the specific concentration.)
<b>Immunogen</b>	Recombinant protein encompassing a sequence within the center region of human Nodal. The exact sequence is proprietary.
<b>Purification</b>	Purified by antigen-affinity chromatography.
<b>Conjugation</b>	Unconjugated

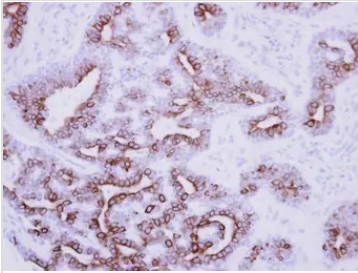


For full product information, images and publications, please visit our [website](#).

For laboratory research use only. Not for any clinical, therapeutic, or diagnostic use in humans or animals. Not for animal or human consumption.

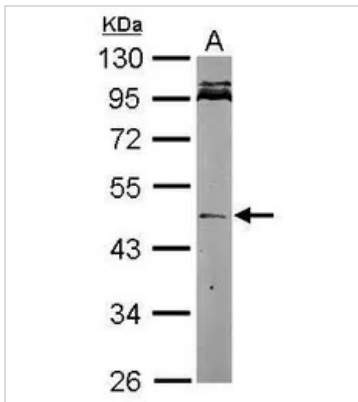
**Note**

Purchasers shall not, and agree not to enable third parties to, analyze, copy, reverse engineer or otherwise attempt to determine the structure or sequence of the product.

**DATA IMAGES**

**GTX106644 IHC-P Image**

Immunohistochemical analysis of paraffin-embedded human breast cancer, using Nodal(GTX106644) antibody at 1:250 dilution.

Antigen Retrieval: Citrate buffer, pH 6.0, 15 min

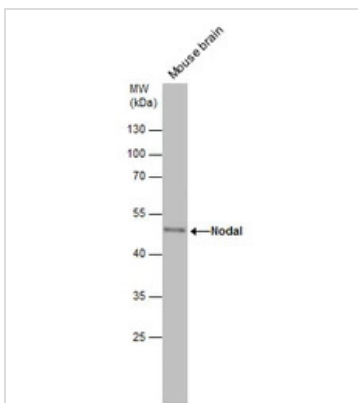

**GTX106644 WB Image**

Sample (20 ug of whole cell lysate)

A: Human ESC

10% SDS PAGE

GTX106644 diluted at 1:1000


**GTX106644 WB Image**

Mouse tissue extract (50 µg) was separated by 10% SDS-PAGE, and the membrane was blotted with Nodal antibody (GTX106644) diluted at 1:500.



For full product information, images and publications, please visit our [website](https://www.genetex.com).