

CHMP5 antibody [N1C3]

Cat. No. GTX106692

Host	Rabbit
Clonality	Polyclonal
Isotype	IgG
Applications	WB, ICC/IF, IHC-P, IP
Reactivity	Human, Mouse

References (1)

★★★★☆ Review (1)

Package

100 µl, 25 µl

Applications

Application Note

*Optimal dilutions/concentrations should be determined by the researcher.

Suggested dilution	Recommended dilution
WB	1:500-1:3000
ICC/IF	1:100-1:1000
IHC-P	1:100-1:1000
IP	Assay dependent

Not tested in other applications.

Calculated MW 25 kDa. ([Note](#))

Properties

Form	Liquid
Buffer	PBS, 20% Glycerol
Preservative	0.01% Thimerosal
Storage	Store as concentrated solution. Centrifuge briefly prior to opening vial. For short-term storage (1-2 weeks), store at 4°C. For long-term storage, aliquot and store at -20°C or below. Avoid multiple freeze-thaw cycles.
Concentration	1 mg/ml (Please refer to the vial label for the specific concentration.)
Immunogen	Recombinant protein encompassing a sequence within the center region of human CHMP5. The exact sequence is proprietary.
Purification	Purified by antigen-affinity chromatography.
Conjugation	Unconjugated

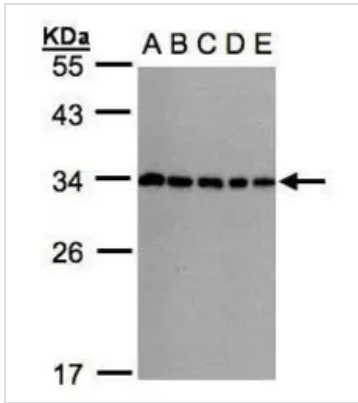


For full product information, images and publications, please visit our [website](#).

For laboratory research use only. Not for any clinical, therapeutic, or diagnostic use in humans or animals. Not for animal or human consumption.

Note

Purchasers shall not, and agree not to enable third parties to, analyze, copy, reverse engineer or otherwise attempt to determine the structure or sequence of the product.

DATA IMAGES

GTx106692 WB Image

Sample(30µg whole cell lysate)

A: 293T

B: A431 (GTx27909)

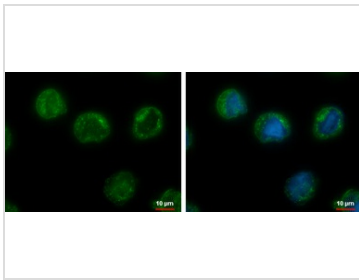
C: H1299

D: HeLa S3 (GTx14654)

E: Hep G2 (GTx27900)

12% SDS PAGE

GTx106692 diluted at 1:1000

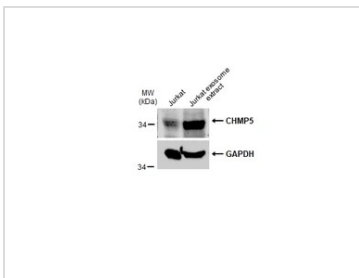

GTx106692 ICC/IF Image

CHMP5 antibody [N1C3] detects CHMP5 protein at cytoplasm by immunofluorescent analysis.

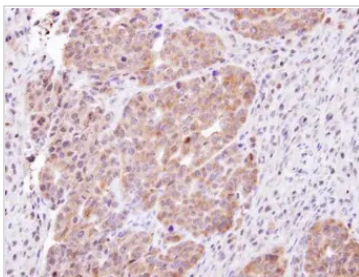
Sample: HL-60 cells were fixed in ice-cold MeOH for 5 min.

Green: CHMP5 protein stained by CHMP5 antibody [N1C3] (GTx106692) diluted at 1:500.

Blue: Hoechst 33342 staining.


GTx106692 WB Image

Jurkat whole cell extracts and Jurkat exosome extract (15.4 µg) were separated by 12% SDS-PAGE, and the membrane was blotted with CHMP5 antibody [N1C3] (GTx106692) diluted at 1:250. The HRP-conjugated anti-rabbit IgG antibody (GTx213110-01) was used to detect the primary antibody.


GTx106692 IHC-P Image

Immunohistochemical analysis of paraffin-embedded NCIN87 xenograft, using CHMP5(GTx106692) antibody at 1:100 dilution.

Antigen Retrieval: Trilogy™ (EDTA based, pH 8.0) buffer, 15min



For full product information, images and publications, please visit our [website](https://www.genetex.com).