

## HGF antibody [24612.111]

Cat. No. GTX10678

Host	Mouse
Clonality	Monoclonal
Isotype	IgG1
Applications	WB, ELISA, Depletion, Neutralizing/Inhibition
Reactivity	Human

References ( 2 )

Package

100 µg

## Applications

## Application Note

\*Optimal dilutions/concentrations should be determined by the researcher.

Suggested dilution	Recommended dilution
WB	1-2 µg/ml
ELISA	0.5-1 µg/ml
Depletion	Assay dependent
Neutralizing/Inhibition	Assay dependent

Not tested in other applications.

Calculated MW 83 kDa. ( [Note](#) )

## Properties

Form	Liquid
Buffer	PBS, 5% Trehalose
Preservative	No preservatives
Storage	Store as concentrated solution. Centrifuge briefly prior to opening vial. For short-term storage (1-2 weeks), store at 4°C. For long-term storage, aliquot and store at -20°C or below. Avoid multiple freeze-thaw cycles.
Concentration	Batch dependent (Please refer to the vial label for the specific concentration.)
Immunogen	recombinant human HGF.
Purification	Purified immunoglobulin
Conjugation	Unconjugated

## Note

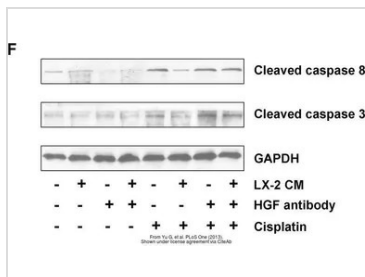
For laboratory research use only. Not for any clinical, therapeutic, or diagnostic use in humans or animals. Not for animal or human consumption.

Purchasers shall not, and agree not to enable third parties to, analyze, copy, reverse engineer or otherwise attempt to determine the structure or sequence of the product.



For full product information, images and publications, please visit our [website](#).

DATA IMAGES



**GTX10678 Depletion Image**

The data was published in the journal PLoS One in 2013. [PMID: 24023859](https://pubmed.ncbi.nlm.nih.gov/24023859/)



For full product information, images and publications, please visit our [website](https://www.genetex.com).