

PACAP antibody [N1C3]

Cat. No. GTX106794

Host	Rabbit
Clonality	Polyclonal
Isotype	IgG
Applications	WB, ICC/IF, IHC-P, IHC-Fr
Reactivity	Human, Mouse, Rat

References (1)

Package

100 µl, 25 µl

Applications

Application Note

*Optimal dilutions/concentrations should be determined by the researcher.

Suggested dilution	Recommended dilution
WB	1:500-1:3000
ICC/IF	Assay dependent
IHC-P	1:100-1:1000
IHC-Fr	1:100-1:1000

Not tested in other applications.

Calculated MW 21 kDa. ([Note](#))

Properties

Form	Liquid
Buffer	PBS, 1% BSA, 20% Glycerol
Preservative	0.025% ProClin 300
Storage	Store as concentrated solution. Centrifuge briefly prior to opening vial. For short-term storage (1-2 weeks), store at 4°C. For long-term storage, aliquot and store at -20°C or below. Avoid multiple freeze-thaw cycles.
Concentration	0.48 mg/ml (Please refer to the vial label for the specific concentration.)
Immunogen	Recombinant protein encompassing a sequence within the center region of human PACAP. The exact sequence is proprietary.
Purification	Purified by antigen-affinity chromatography.
Conjugation	Unconjugated



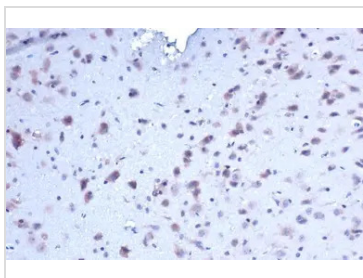
For full product information, images and publications, please visit our [website](#).

For laboratory research use only. Not for any clinical, therapeutic, or diagnostic use in humans or animals. Not for animal or human consumption.

Note

Purchasers shall not, and agree not to enable third parties to, analyze, copy, reverse engineer or otherwise attempt to determine the structure or sequence of the product.

DATA IMAGES



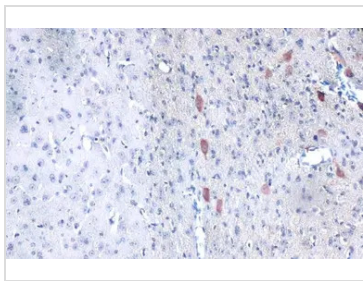
GTx106794 IHC-P Image

PACAP antibody [N1C3] detects PACAP protein at cytoplasm by immunohistochemical analysis.

Sample: Paraffin-embedded rat brain.

PACAP stained by PACAP antibody [N1C3] (GTx106794) diluted at 1:200.

Antigen Retrieval: Citrate buffer, pH 6.0, 15 min



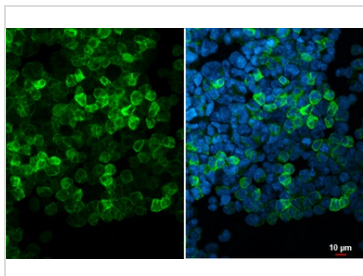
GTx106794 IHC-P Image

PACAP antibody [N1C3] detects PACAP protein at cytoplasm by immunohistochemical analysis.

Sample: Paraffin-embedded mouse brain.

PACAP stained by PACAP antibody [N1C3] (GTx106794) diluted at 1:200.

Antigen Retrieval: Citrate buffer, pH 6.0, 15 min



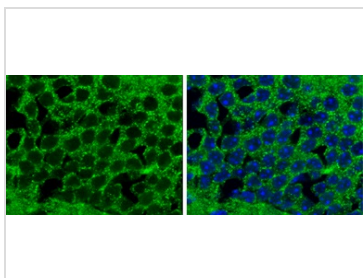
GTx106794 ICC/IF Image

PACAP antibody [N1C3] detects PACAP protein at cytoplasm by immunofluorescent analysis.

Sample: Raji cells were fixed in 4% paraformaldehyde at RT for 15 min.

Green: PACAP stained by PACAP antibody [N1C3] (GTx106794) diluted at 1:500.

Blue: Fluoroshield with DAPI (GTx30920).



GTx106794 IHC-Fr Image

PACAP antibody [N1C3] detects PACAP protein at cytoplasm in mouse brain by immunohistochemical analysis.

Sample: Frozen section of mouse brain.

PACAP antibody [N1C3] (GTx106794) diluted at 1:500.



For full product information, images and publications, please visit our [website](#).