

## TSPAN3 antibody

Cat. No. GTX106868

|              |                   |
|--------------|-------------------|
| Host         | Rabbit            |
| Clonality    | Polyclonal        |
| Isotype      | IgG               |
| Applications | WB, ICC/IF, IHC-P |
| Reactivity   | Human, Mouse      |

Package  
100 µl, 25 µl

## Applications

## Application Note

\*Optimal dilutions/concentrations should be determined by the researcher.

| Suggested dilution | Recommended dilution |
|--------------------|----------------------|
| WB                 | 1:500-1:3000         |
| ICC/IF             | 1:100-1:1000         |
| IHC-P              | 1:100-1:1000         |

Not tested in other applications.

Calculated MW 28 kDa. ( [Note](#) )

## Properties

|               |  |
|---------------|--|
| Form          | Liquid   |
| Buffer        | PBS, 1% BSA, 20% Glycerol  |
| Preservative  | 0.01% Thimerosal   |
| Storage       | Store as concentrated solution. Centrifuge briefly prior to opening vial. For short-term storage (1-2 weeks), store at 4°C. For long-term storage, aliquot and store at -20°C or below. Avoid multiple freeze-thaw cycles. |
| Concentration | 1 mg/ml (Please refer to the vial label for the specific concentration.)   |
| Immunogen     | Recombinant protein encompassing a sequence within the center region of human TSPAN3. The exact sequence is proprietary.   |
| Purification  | Purified by antigen-affinity chromatography.   |
| Conjugation   | Unconjugated   |

## Note

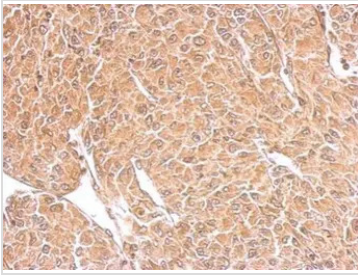
For laboratory research use only. Not for any clinical, therapeutic, or diagnostic use in humans or animals. Not for animal or human consumption.

Purchasers shall not, and agree not to enable third parties to, analyze, copy, reverse engineer or otherwise attempt to determine the structure or sequence of the product.



For full product information, images and publications, please visit our [website](#).

## DATA IMAGES



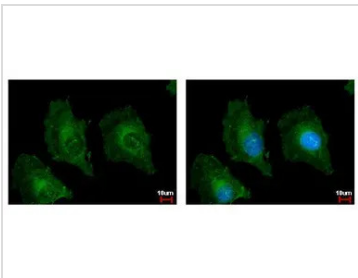
### GTx106868 IHC-P Image

TSPAN3 antibody detects TSPAN3 protein at cytosol on U87 xenograft by immunohistochemical analysis.

Sample: Paraffin-embedded U87 xenograft.

TSPAN3 antibody (GTx106868) dilution: 1:500.

Antigen Retrieval: Trilogy™ (EDTA based, pH 8.0) buffer, 15min



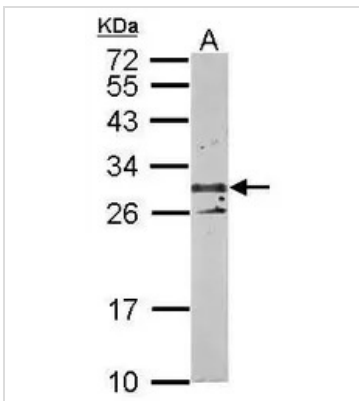
### GTx106868 ICC/IF Image

TSPAN3 antibody detects TSPAN3 protein at cytoplasm by immunofluorescent analysis.

Sample: HeLa cells were fixed in ice-cold MeOH for 5 min.

Green: TSPAN3 protein stained by TSPAN3 antibody (GTx106868) diluted at 1:500.

Blue: Hoechst 33342 staining.



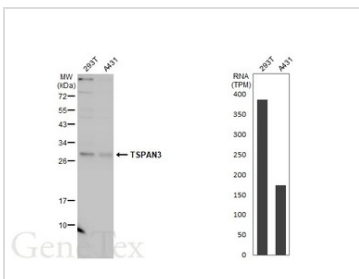
### GTx106868 WB Image

Sample (50 ug of whole cell lysate)

A: mouse kidney

12% SDS PAGE

GTx106868 diluted at 1:1000



### GTx106868 WB Image

Various whole cell extracts (30 μg) were separated by 12% SDS-PAGE, and the membrane was blotted with TSPAN3 antibody (GTx106868) diluted at 1:1000. The HRP-conjugated anti-rabbit IgG antibody (GTx213110-01) was used to detect the primary antibody, and the signal was developed with Trident ECL plus-Enhanced. Corresponding RNA expression data for the same cell lines are based on Human Protein Atlas program.



For full product information, images and publications, please visit our [website](https://www.genetex.com).