

p90 RSK1 (phospho Ser221) antibody

Cat. No. GTX10695

Host	Rabbit
Clonality	Polyclonal
Isotype	IgG
Applications	WB, IHC-P
Reactivity	Human, Mouse, Chicken

Package

50 µl

Applications

Application Note

*Optimal dilutions/concentrations should be determined by the researcher.

Suggested dilution	Recommended dilution
WB	Assay dependent
IHC-P	1:10-1:100

Not tested in other applications.

Calculated MW 83 kDa. ([Note](#))

Properties

Form	Liquid
Buffer	PBS, 0.1% BSA, 50% Glycerol
Preservative	0.05% Sodium azide
Storage	Store as concentrated solution. Centrifuge briefly prior to opening vial. For short-term storage (1-2 weeks), store at 4°C. For long-term storage, aliquot and store at -20°C or below. Avoid multiple freeze-thaw cycles.
Concentration	Batch dependent (Please refer to the vial label for the specific concentration.)
Immunogen	The antiserum was produced against a chemically synthesized phosphopeptide derived from a region of human RSK1 that contains serine 221. The sequence is conserved in mouse and rat.
Purification	Purified by antigen-affinity chromatography
Conjugation	Unconjugated

Note

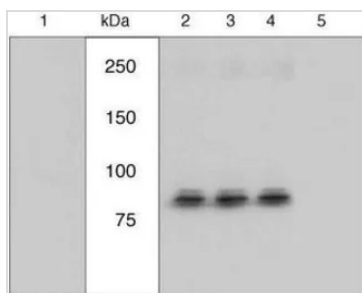
For laboratory research use only. Not for any clinical, therapeutic, or diagnostic use in humans or animals. Not for animal or human consumption.

Purchasers shall not, and agree not to enable third parties to, analyze, copy, reverse engineer or otherwise attempt to determine the structure or sequence of the product.



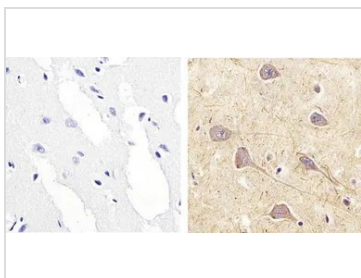
For full product information, images and publications, please visit our [website](#).

DATA IMAGES



GTX10695 WB Image

WB (peptide competition) analysis of untreated A431 (Lane 1) or PMA-stimulated A431 cells (Lane 2~5) using GTX10695 p90 RSK1 (phospho Ser221) antibody prior incubated with the non-phosphopeptide (Lane 3), a generic [pS] peptide (Lane 4), or, the phosphopeptide immunogen (Lane 5) control. The data show that only the immunogen phosphopeptide blocks the signal, demonstrating the specificity of the antibody.



GTX10695 IHC-P Image

IHC-P analysis of human brain tissue using GTX10695 p90 RSK1 (phospho Ser221) antibody.

Right : Primary antibody

Left : Negative control without primary antibody

Antigen retrieval : 10mM sodium citrate (pH 6.0), microwaved for 8-15 min

Dilution : 1:20



For full product information, images and publications, please visit our [website](https://www.genetex.com).