

BZW2 antibody

Cat. No. GTX106985

Host	Rabbit
Clonality	Polyclonal
Isotype	IgG
Applications	WB, ICC/IF, IHC-P
Reactivity	Human, Mouse, Rat

References (1)

Package

100 µl, 25 µl

Applications

Application Note

*Optimal dilutions/concentrations should be determined by the researcher.

Suggested dilution	Recommended dilution
WB	1:500-1:3000
ICC/IF	1:100-1:1000
IHC-P	1:100-1:1000

Not tested in other applications.

Calculated MW 48 kDa. ([Note](#))

Properties

Form	Liquid
Buffer	0.1M Tris, 0.1M Glycine, 10% Glycerol
Preservative	0.01% Thimerosal
Storage	Store as concentrated solution. Centrifuge briefly prior to opening vial. For short-term storage (1-2 weeks), store at 4°C. For long-term storage, aliquot and store at -20°C or below. Avoid multiple freeze-thaw cycles.
Concentration	0.57 mg/ml (Please refer to the vial label for the specific concentration.)
Immunogen	Recombinant protein encompassing a sequence within the center region of human BZW2. The exact sequence is proprietary.
Purification	Purified by antigen-affinity chromatography.
Conjugation	Unconjugated

Note

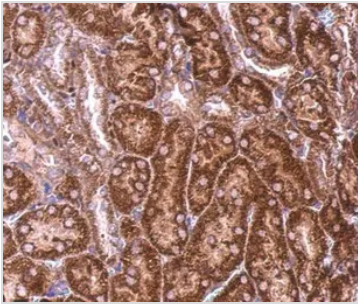
For laboratory research use only. Not for any clinical, therapeutic, or diagnostic use in humans or animals. Not for animal or human consumption.

Purchasers shall not, and agree not to enable third parties to, analyze, copy, reverse engineer or otherwise attempt to determine the structure or sequence of the product.



For full product information, images and publications, please visit our [website](#).

DATA IMAGES



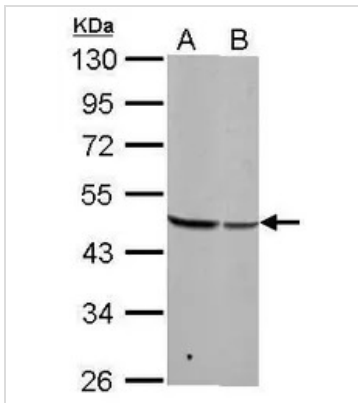
GTX106985 IHC-P Image

BZW2 antibody detects BZW2 protein at cytosol on mouse kidney by immunohistochemical analysis.

Sample: Paraffin-embedded mouse kidney.

BZW2 antibody (GTX106985) dilution: 1:500.

Antigen Retrieval: Trilogy™ (EDTA based, pH 8.0) buffer, 15min



GTX106985 WB Image

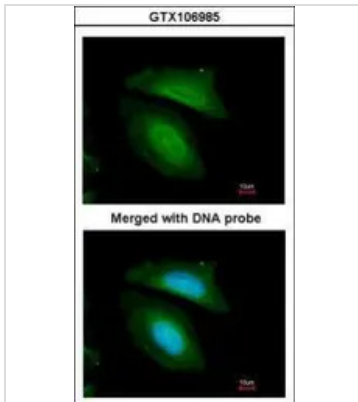
BZW2 antibody detects BZW2 protein by Western blot analysis.

A. 30 µg Neuro2A whole cell lysate/extract

B. 30 µg C8D30 whole cell lysate/extract

10 % SDS-PAGE

BZW2 antibody (GTX106985) dilution: 1:1000



GTX106985 ICC/IF Image

Immunofluorescence analysis of paraformaldehyde-fixed HeLa, using BZW2(GTX106985) antibody at 1:200 dilution.



For full product information, images and publications, please visit our [website](https://www.genetex.com).