

Doublecortin antibody [N3C3]

Cat. No. GTX107133

Host	Rabbit
Clonality	Polyclonal
Isotype	IgG
Applications	WB, ICC/IF
Reactivity	Human

Package
100 µl, 25 µl

Applications

Application Note

*Optimal dilutions/concentrations should be determined by the researcher.

Suggested dilution	Recommended dilution
WB	1:500-1:3000
ICC/IF	1:50-1:200

Not tested in other applications.

Calculated MW 49 kDa. ([Note](#))

Properties

Form	Liquid
Buffer	0.1M Tris, 0.1M Glycine, 10% Glycerol
Preservative	0.01% Thimerosal
Storage	Store as concentrated solution. Centrifuge briefly prior to opening vial. For short-term storage (1-2 weeks), store at 4°C. For long-term storage, aliquot and store at -20°C or below. Avoid multiple freeze-thaw cycles.
Concentration	0.76 mg/ml (Please refer to the vial label for the specific concentration.)
Immunogen	Recombinant protein encompassing a sequence within the center region of human Doublecortin. The exact sequence is proprietary.
Purification	Purified by antigen-affinity chromatography.
Conjugation	Unconjugated

Note

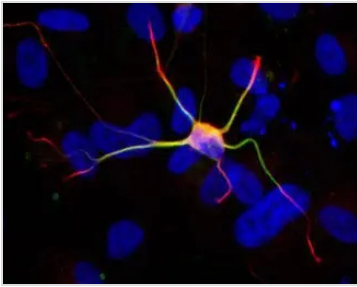
For laboratory research use only. Not for any clinical, therapeutic, or diagnostic use in humans or animals. Not for animal or human consumption.

Purchasers shall not, and agree not to enable third parties to, analyze, copy, reverse engineer or otherwise attempt to determine the structure or sequence of the product.



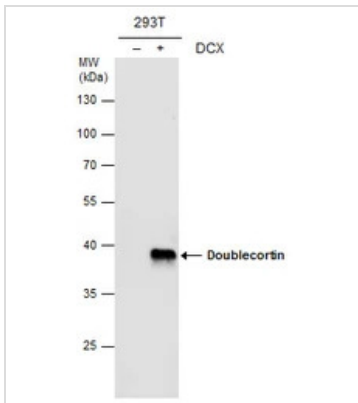
For full product information, images and publications, please visit our [website](#).

DATA IMAGES



GTX107133 ICC/IF Image

Immunofluorescent staining of neurons derived from human ESC with a 1:200 dilution of GeneTex anti-doublecortin antibody (GTX107133). Anti-doublecortin antibody (red) colocalizes with anti-MAP2 antibody (green). Image courtesy of Jente Lu, UC Irvine.



GTX107133 WB Image

Doublecortin antibody detects Doublecortin protein by western blot analysis. Non-transfected (-) and Doublecortin-transfected (+,) 293T whole cell extracts (30 µg) were separated by 10% SDS-PAGE, and the membrane was blotted with Doublecortin antibody (GTX107133) at a dilution of 1:1000.



For full product information, images and publications, please visit our [website](https://www.genetex.com).