

C6orf97 antibody

Cat. No. GTX107144

Host	Rabbit
Clonality	Polyclonal
Isotype	IgG
Applications	WB, ICC/IF, IHC-P
Reactivity	Human

References (2)

Package

100 µl, 25 µl

Applications

Application Note

*Optimal dilutions/concentrations should be determined by the researcher.

Suggested dilution	Recommended dilution
WB	1:500-1:3000
ICC/IF	1:100-1:1000
IHC-P	1:100-1:1000

Not tested in other applications.

Calculated MW 82 kDa. ([Note](#))

Properties

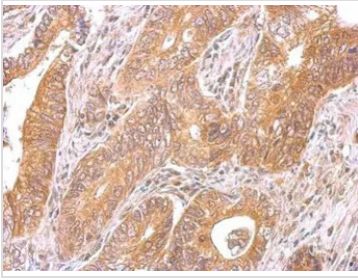
Form	Liquid
Buffer	0.1M Tris, 0.1M Glycine, 10% Glycerol
Preservative	0.01% Thimerosal
Storage	Store as concentrated solution. Centrifuge briefly prior to opening vial. For short-term storage (1-2 weeks), store at 4°C. For long-term storage, aliquot and store at -20°C or below. Avoid multiple freeze-thaw cycles.
Concentration	1 mg/ml (Please refer to the vial label for the specific concentration.)
Immunogen	Recombinant protein encompassing a sequence within the C-terminus region of human C6orf97. The exact sequence is proprietary.
Purification	Purified by antigen-affinity chromatography.
Conjugation	Unconjugated

Note

For laboratory research use only. Not for any clinical, therapeutic, or diagnostic use in humans or animals. Not for animal or human consumption.

Purchasers shall not, and agree not to enable third parties to, analyze, copy, reverse engineer or otherwise attempt to determine the structure or sequence of the product.

For full product information, images and publications, please visit our [website](#).

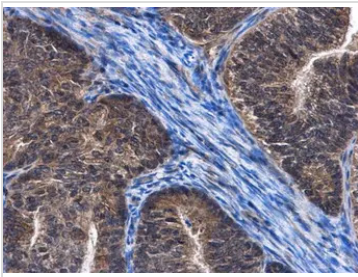
DATA IMAGES

GTX107144 IHC-P Image

C6orf97 antibody detects C6orf97 protein at cytosol on human gastric cancer by immunohistochemical analysis.

Sample: Paraffin-embedded gastric cancer.

C6orf97 antibody (GTX107144) dilution: 1:500.

Antigen Retrieval: Trilogy™ (EDTA based, pH 8.0) buffer, 15min

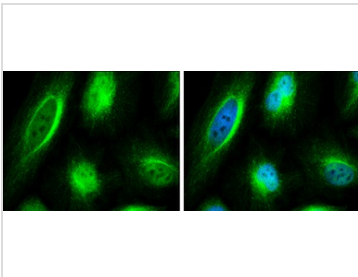

GTX107144 IHC-P Image

C6orf97 antibody detects C6orf97 protein at cytoplasm in human endometrial cancer by immunohistochemical analysis.

Sample: Paraffin-embedded human endometrial cancer.

C6orf97 antibody (GTX107144) diluted at 1:500.

Antigen Retrieval: Citrate buffer, pH 6.0, 15 min

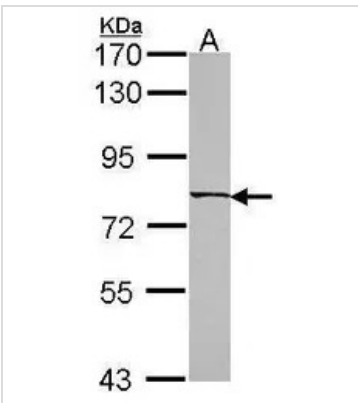

GTX107144 ICC/IF Image

C6orf97 antibody detects C6orf97 protein at cytoplasm and nucleus by immunofluorescent analysis.

Sample: HeLa cells were fixed in 4% paraformaldehyde at RT for 15 min.

Green: C6orf97 protein stained by C6orf97 antibody (GTX107144) diluted at 1:200.

Blue: Hoechst 33342 staining.


GTX107144 WB Image

Sample (30 ug of whole cell lysate)

A: A549

7.5% SDS PAGE

GTX107144 diluted at 1:1000



For full product information, images and publications, please visit our [website](http://www.genetex.com).