

VCPIP1 antibody [C2C3], C-term

Cat. No. GTX107169

Host	Rabbit
Clonality	Polyclonal
Isotype	IgG
Application	WB, ICC/IF, IHC-P
Reactivity	Human, Mouse

Package
100 µl, 25 µl

APPLICATION

Application Note

*Optimal dilutions/concentrations should be determined by the researcher.

Suggested dilution	Recommended dilution
WB	1:500-1:3000
ICC/IF	1:100-1:1000
IHC-P	1:100-1:1000

Not tested in other applications.

Calculated MW 134 kDa. ([Note](#))

PROPERTIES

Form	Liquid
Buffer	0.1M Tris, 0.1M Glycine, 10% Glycerol
Preservative	0.01% Thimerosal
Storage	Store as concentrated solution. Centrifuge briefly prior to opening vial. For short-term storage (1-2 weeks), store at 4°C. For long-term storage, aliquot and store at -20°C or below. Avoid multiple freeze-thaw cycles.
Concentration	1 mg/ml (Please refer to the vial label for the specific concentration.)
Immunogen	Recombinant protein encompassing a sequence within the C-terminus region of human VCPIP1. The exact sequence is proprietary.
Purification	Purified by antigen-affinity chromatography.
Conjugation	Unconjugated

Note

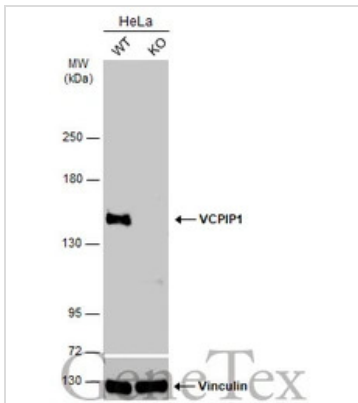
For laboratory research use only. Not for any clinical, therapeutic, or diagnostic use in humans or animals. Not for animal or human consumption.

Purchasers shall not, and agree not to enable third parties to, analyze, copy, reverse engineer or otherwise attempt to determine the structure or sequence of the product.



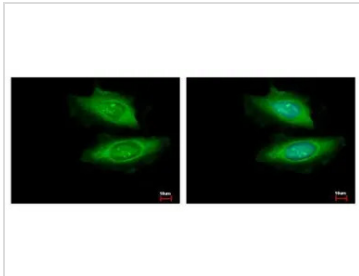
For full product information, images and publications, please visit our [website](#).

DATA IMAGES



GTXT107169 WB Image

Wild-type (WT) and VCPIP1 knockout (KO) HeLa cell extracts (30 µg) were separated by 5% SDS-PAGE, and the membrane was blotted with VCPIP1 antibody [C2C3], C-term (GTXT107169) diluted at 1:1000. The HRP-conjugated anti-rabbit IgG antibody (GTXT213110-01) was used to detect the primary antibody.



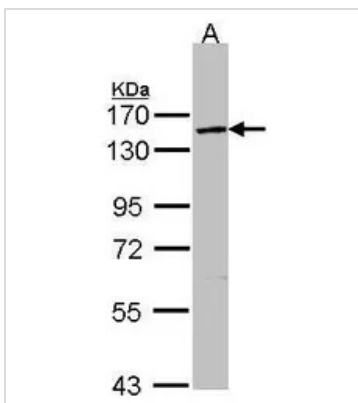
GTXT107169 ICC/IF Image

VCPIP1 antibody [C2C3], C-term detects VCPIP1 protein at Cytoplasm by immunofluorescent analysis.

Sample: HeLa cells were fixed in -20°C 100% MeOH for 5 min.

Green: VCPIP1 protein stained by VCPIP1 antibody [C2C3], C-term (GTXT107169) diluted at 1:500.

Blue: Hoechst 33343 staining.



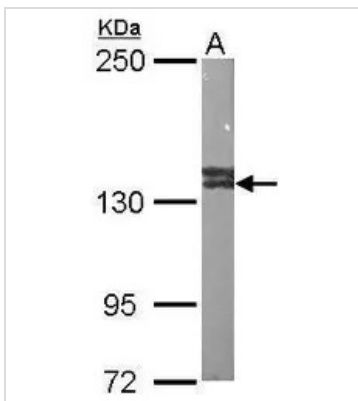
GTXT107169 WB Image

Sample (30 ug of whole cell lysate)

A: H1299

7.5 % SDS PAGE

GTXT107169 diluted at 1:5000



GTXT107169 WB Image

Sample (50 ug of whole cell lysate)

A: Mouse brain

5% SDS PAGE

GTXT107169 diluted at 1:1000



For full product information, images and publications, please visit our [website](https://www.genetex.com).