

## EIF4A1 antibody

**Cat. No. GTX107319**

|                     |                       |
|---------------------|-----------------------|
| <b>Host</b>         | Rabbit                |
| <b>Clonality</b>    | Polyclonal            |
| <b>Isotype</b>      | IgG                   |
| <b>Applications</b> | WB, ICC/IF, IHC-P, IP |
| <b>Reactivity</b>   | Human                 |

References ( 1 )

Package

100 µl, 25 µl

## Applications

**Application Note**

\*Optimal dilutions/concentrations should be determined by the researcher.

| Suggested dilution | Recommended dilution |
|--------------------|----------------------|
| WB                 | 1:500-1:3000         |
| ICC/IF             | 1:100-1:1000         |
| IHC-P              | 1:100-1:1000         |
| IP                 | 1:100-1:500          |

Not tested in other applications.

**Calculated MW** 46 kDa. ( [Note](#) )

## Properties

|                      |  |
|----------------------|--|
| <b>Form</b>          | Liquid   |
| <b>Buffer</b>        | PBS, 20% Glycerol  |
| <b>Preservative</b>  | 0.025% ProClin 300   |
| <b>Storage</b>       | Store as concentrated solution. Centrifuge briefly prior to opening vial. For short-term storage (1-2 weeks), store at 4°C. For long-term storage, aliquot and store at -20°C or below. Avoid multiple freeze-thaw cycles. |
| <b>Concentration</b> | 1 mg/ml (Please refer to the vial label for the specific concentration.)   |
| <b>Immunogen</b>     | Recombinant protein encompassing a sequence within the center region of human EIF4A1. The exact sequence is proprietary.   |
| <b>Purification</b>  | Purified by antigen-affinity chromatography.   |
| <b>Conjugation</b>   | Unconjugated   |



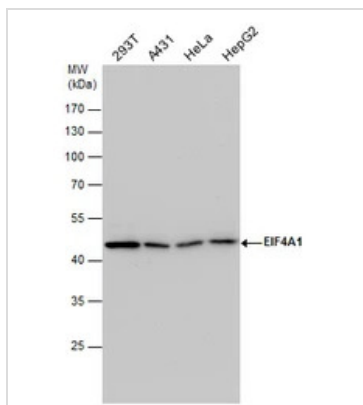
For full product information, images and publications, please visit our [website](#).

For laboratory research use only. Not for any clinical, therapeutic, or diagnostic use in humans or animals. Not for animal or human consumption.

**Note**

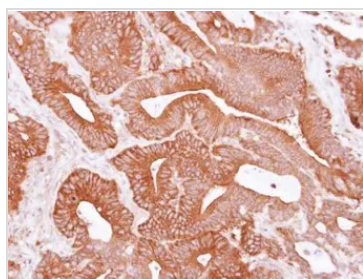
Purchasers shall not, and agree not to enable third parties to, analyze, copy, reverse engineer or otherwise attempt to determine the structure or sequence of the product.

DATA IMAGES



**GTX107319 WB Image**

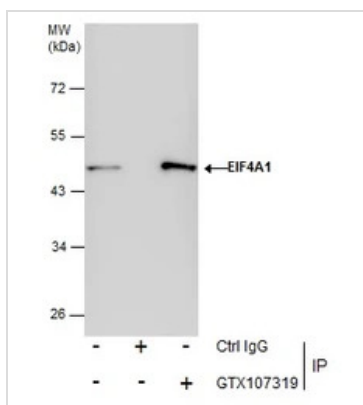
EIF4A1 antibody detects EIF4A1 protein by Western blot analysis. Various whole cell extracts (30 µg) were separated by 10% SDS-PAGE, and the membrane was blotted with EIF4A1 antibody (GTX107319) diluted by 1:3000.



**GTX107319 IHC-P Image**

Immunohistochemical analysis of paraffin-embedded human colon carcinoma, using EIF4A1(GTX107319) antibody at 1:500 dilution.

Antigen Retrieval: Trilogy™ (EDTA based, pH 8.0) buffer, 15min



**GTX107319 IP Image**

Immunoprecipitation of EIF4A1 protein from HepG2 whole cell extracts using 5 µg of EIF4A1 antibody (GTX107319).

Western blot analysis was performed using EIF4A1 antibody (GTX107319).

EasyBlot anti-Rabbit IgG (GTX221666-01) was used as a secondary reagent.



For full product information, images and publications, please visit our [website](#).