

TFIIB antibody [N1C3]

Cat. No. GTX107327

Host	Rabbit
Clonality	Polyclonal
Isotype	IgG
Application	WB, ICC/IF, IHC-P
Reactivity	Human

Package
100 µl, 25 µl

APPLICATION

Application Note

*Optimal dilutions/concentrations should be determined by the researcher.

Suggested dilution	Recommended dilution
WB	1:500-1:3000
ICC/IF	1:100-1:1000
IHC-P	1:100-1:1000

Not tested in other applications.

Calculated MW 35 kDa. ([Note](#))

PROPERTIES

Form	Liquid
Buffer	PBS, 20% Glycerol
Preservative	0.025% ProClin 300
Storage	Store as concentrated solution. Centrifuge briefly prior to opening vial. For short-term storage (1-2 weeks), store at 4°C. For long-term storage, aliquot and store at -20°C or below. Avoid multiple freeze-thaw cycles.
Concentration	1.56 mg/ml (Please refer to the vial label for the specific concentration.)
Immunogen	Recombinant protein encompassing a sequence within the center region of human TFIIB. The exact sequence is proprietary.
Purification	Purified by antigen-affinity chromatography.
Conjugation	Unconjugated

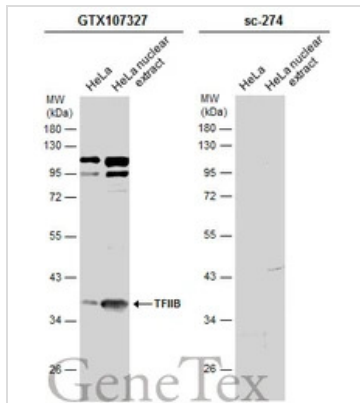
Note

For laboratory research use only. Not for any clinical, therapeutic, or diagnostic use in humans or animals. Not for animal or human consumption.

Purchasers shall not, and agree not to enable third parties to, analyze, copy, reverse engineer or otherwise attempt to determine the structure or sequence of the product.

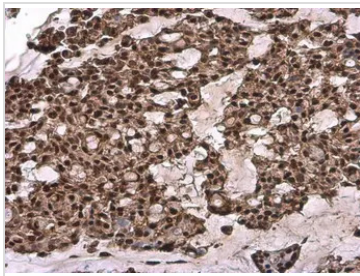


For full product information, images and publications, please visit our [website](#).

DATA IMAGES

GTX107327 WB Image

HeLa whole cell and nuclear extracts (30 µg) were separated by 10% SDS-PAGE, and the membranes were blotted with TFIIIB antibody [N1C3] (GTX107327) diluted at 1:500 and competitor's antibody (sc-274) diluted at 1:500. The HRP-conjugated anti-rabbit IgG antibody (GTX213110-01) was used to detect the primary antibody.

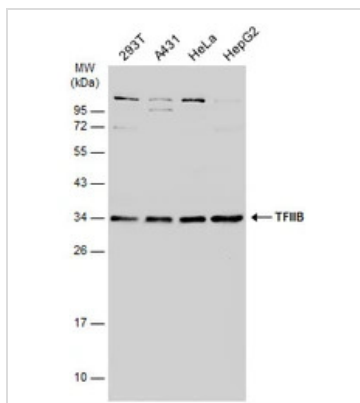
*The competitor is not affiliated with GeneTex and does not endorse this product.


GTX107327 IHC-P Image

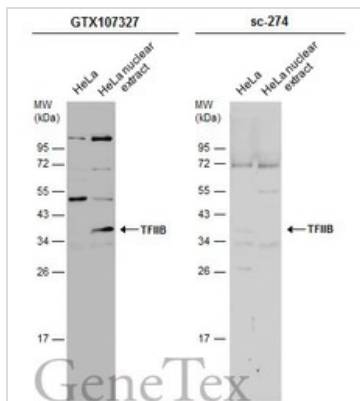
TFIIIB antibody [N1C3] detects TFIIIB protein at cytoplasm and nucleus by immunohistochemical analysis.

Sample: Paraffin-embedded human breast carcinoma.

TFIIIB stained by TFIIIB antibody [N1C3] (GTX107327) diluted at 1:500.


GTX107327 WB Image

Various whole cell extracts (30 µg) were separated by 12% SDS-PAGE, and the membrane was blotted with TFIIIB antibody [N1C3] (GTX107327) diluted at 1:1000. The HRP-conjugated anti-rabbit IgG antibody (GTX213110-01) was used to detect the primary antibody.


GTX107327 WB Image

HeLa whole cell and nuclear extracts (30 µg) were separated by 12% SDS-PAGE, and the membranes were blotted with TFIIIB antibody [N1C3] (GTX107327) diluted at 1:1500 and competitor's antibody (sc-274) diluted at 1:100. The HRP-conjugated anti-rabbit IgG antibody (GTX213110-01) was used to detect the primary antibody.

*The competitor is not affiliated with GeneTex and does not endorse this product.



For full product information, images and publications, please visit our [website](https://www.genetex.com).