

KRT71 antibody [N3C3]

Cat. No. GTX107343

Host	Rabbit
Clonality	Polyclonal
Isotype	IgG
Applications	WB, ICC/IF, IHC-P
Reactivity	Human, Sheep

References (4)

Package

100 µl, 25 µl

Applications

Application Note

*Optimal dilutions/concentrations should be determined by the researcher.

Suggested dilution	Recommended dilution
WB	1:1000-1:10000
ICC/IF	1:100-1:1000
IHC-P	1:100-1:1000

Not tested in other applications.

Calculated MW 57 kDa. ([Note](#))

Properties

Form	Liquid
Buffer	0.1M Tris, 0.1M Glycine, 20% Glycerol
Preservative	0.01% Thimerosal
Storage	Store as concentrated solution. Centrifuge briefly prior to opening vial. For short-term storage (1-2 weeks), store at 4°C. For long-term storage, aliquot and store at -20°C or below. Avoid multiple freeze-thaw cycles.
Concentration	0.91 mg/ml (Please refer to the vial label for the specific concentration.)
Immunogen	Recombinant protein encompassing a sequence within the center region of human KRT71. The exact sequence is proprietary.
Purification	Purified by antigen-affinity chromatography.
Conjugation	Unconjugated

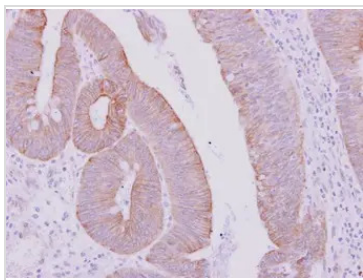
Note

For laboratory research use only. Not for any clinical, therapeutic, or diagnostic use in humans or animals. Not for animal or human consumption.

Purchasers shall not, and agree not to enable third parties to, analyze, copy, reverse engineer or otherwise attempt to determine the structure or sequence of the product.

For full product information, images and publications, please visit our [website](#).

DATA IMAGES

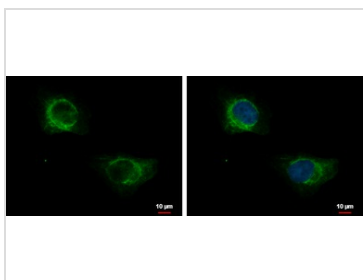
**GTX107343 IHC-P Image**

KRT71 antibody [N3C3] detects KRT71 protein at membrane on human colon carcinoma by immunohistochemical analysis.

Sample: Paraffin-embedded colon carcinoma.

KRT71 antibody [N3C3] (GTX107343) dilution: 1:500.

Antigen Retrieval: Trilogy™ (EDTA based, pH 8.0) buffer, 15min

**GTX107343 ICC/IF Image**

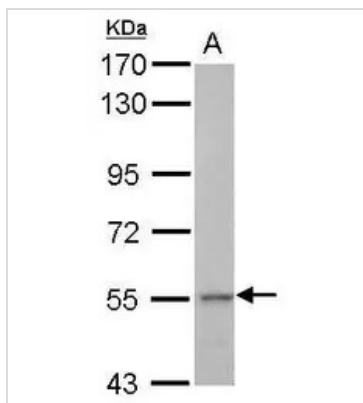
KRT71 antibody [N3C3] detects KRT71 protein at cytoplasm by immunofluorescent analysis.

Sample: HeLa cells were fixed in 4% paraformaldehyde at RT for 15 min.

Green: KRT71 protein stained by KRT71 antibody [N3C3] (GTX107343) diluted at 1:500.

Blue: Hoechst 33342 staining.

Scale bar = 10 μm.

**GTX107343 WB Image**

Sample (30 ug of whole cell lysate)

A: HepG2

7.5% SDS PAGE

GTX107343 diluted at 1:5000



For full product information, images and publications, please visit our [website](https://www.genetex.com).