

STK3 antibody

Cat. No. GTX107417

Host	Rabbit
Clonality	Polyclonal
Isotype	IgG
Applications	WB, ICC/IF, IHC-P
Reactivity	Human, Mouse

Package
100 µl, 25 µl

Applications

Application Note

*Optimal dilutions/concentrations should be determined by the researcher.

Suggested dilution	Recommended dilution
WB	1:1000-1:10000
ICC/IF	1:100-1:1000
IHC-P	1:100-1:1000

Not tested in other applications.

Calculated MW 56 kDa. ([Note](#))

Properties

Form	Liquid
Buffer	0.1M Tris, 0.1M Glycine, 10% Glycerol
Preservative	0.01% Thimerosal
Storage	Store as concentrated solution. Centrifuge briefly prior to opening vial. For short-term storage (1-2 weeks), store at 4°C. For long-term storage, aliquot and store at -20°C or below. Avoid multiple freeze-thaw cycles.
Concentration	0.84 mg/ml (Please refer to the vial label for the specific concentration.)
Immunogen	Recombinant protein encompassing a sequence within the center region of human STK3. The exact sequence is proprietary.
Purification	Purified by antigen-affinity chromatography.
Conjugation	Unconjugated

Note

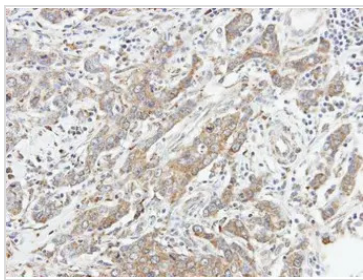
For laboratory research use only. Not for any clinical, therapeutic, or diagnostic use in humans or animals. Not for animal or human consumption.

Purchasers shall not, and agree not to enable third parties to, analyze, copy, reverse engineer or otherwise attempt to determine the structure or sequence of the product.



For full product information, images and publications, please visit our [website](#).

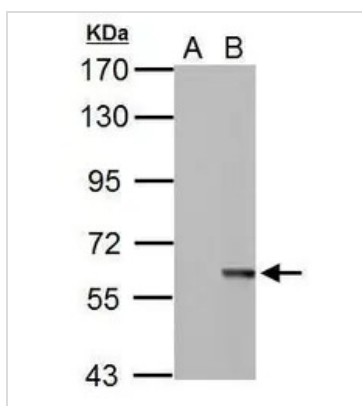
DATA IMAGES



GTX107417 IHC-P Image

Immunohistochemical analysis of paraffin-embedded human gastric cancer, using STK3(GTX107417) antibody at 1:100 dilution.

Antigen Retrieval: Trilogy™ (EDTA based, pH 8.0) buffer, 15min



GTX107417 WB Image

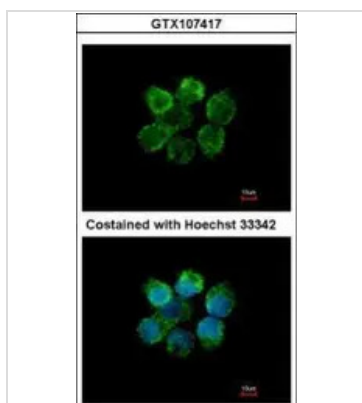
Sample (30 ug of whole cell lysate)

A: Non-transfected 293T lysates

B: STK3 transfected 293T lysates

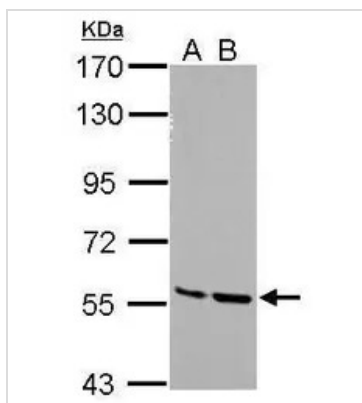
7.5% SDS PAGE

GTX107417 diluted at 1:5000



GTX107417 ICC/IF Image

Immunofluorescence analysis of methanol-fixed A431, using STK3(GTX107417) antibody at 1:500 dilution.



GTX107417 WB Image

Sample (30 ug of whole cell lysate)

A: NIH-3T3

B: JC

7.5% SDS PAGE

GTX107417 diluted at 1:5000



For full product information, images and publications, please visit our [website](http://www.genetex.com).