

## CaMKI gamma antibody

**Cat. No. GTX107499**

<b>Host</b>	Rabbit
<b>Clonality</b>	Polyclonal
<b>Isotype</b>	IgG
<b>Applications</b>	WB, IHC-P
<b>Reactivity</b>	Human, Mouse, Rat

**Package**  
100 µl, 25 µl

## Applications

**Application Note**

\*Optimal dilutions/concentrations should be determined by the researcher.

Suggested dilution	Recommended dilution
WB	1:500-1:10000
IHC-P	1:100-1:1000

Not tested in other applications.

**Calculated MW** 53 kDa. ( [Note](#) )

## Properties

<b>Form</b>	Liquid
<b>Buffer</b>	0.1M Tris, 0.1M Glycine, 10% Glycerol
<b>Preservative</b>	0.01% Thimerosal
<b>Storage</b>	Store as concentrated solution. Centrifuge briefly prior to opening vial. For short-term storage (1-2 weeks), store at 4°C. For long-term storage, aliquot and store at -20°C or below. Avoid multiple freeze-thaw cycles.
<b>Concentration</b>	0.84 mg/ml (Please refer to the vial label for the specific concentration.)
<b>Immunogen</b>	Recombinant protein encompassing a sequence within the center region of human CaMKI gamma. The exact sequence is proprietary.
<b>Purification</b>	Purified by antigen-affinity chromatography.
<b>Conjugation</b>	Unconjugated

**Note**

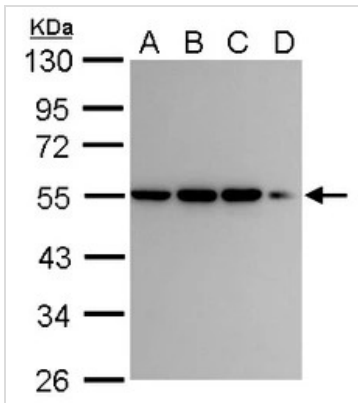
For laboratory research use only. Not for any clinical, therapeutic, or diagnostic use in humans or animals. Not for animal or human consumption.

Purchasers shall not, and agree not to enable third parties to, analyze, copy, reverse engineer or otherwise attempt to determine the structure or sequence of the product.



For full product information, images and publications, please visit our [website](#).

## DATA IMAGES



### GTX107499 WB Image

CaMKI gamma antibody detects CaMKI gamma protein by western blot analysis.

A. 30 µg U87-MG whole cell lysate/extract

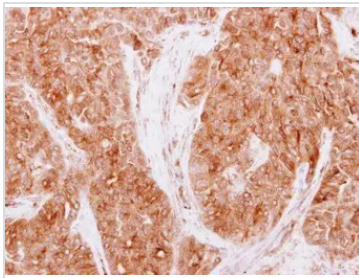
B. 30 µg SK-N-SH whole cell lysate/extract

C. 30 µg IMR32 whole cell lysate/extract

D. 30 µg SK-N-AS whole cell lysate/extract

10 % SDS-PAGE

CaMKI gamma antibody (GTX107499) dilution: 1:5000



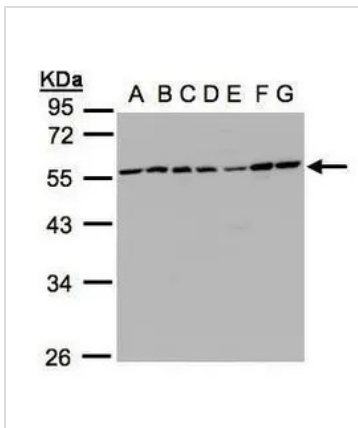
### GTX107499 IHC-P Image

CaMKI gamma antibody detects CAMK1G protein at cytoplasm on human lung carcinoma by immunohistochemical analysis.

Sample: Paraffin-embedded lung carcinoma.

CaMKI gamma antibody (GTX107499) dilution: 1:250.

Antigen Retrieval: Trilogy™ (EDTA based, pH 8.0) buffer, 15min



### GTX107499 WB Image

Sample(30µg whole cell lysate)

A: 293T

B: A431 (GTX27909)

C: H1299

D: HeLa S3 (GTX14654)

E: Hep G2 (GTX27900)

F: MOLT4 (GTX27912)

G: Raji (GTX27908)

10% SDS PAGE

GTX107499 diluted at 1:1000



For full product information, images and publications, please visit our [website](https://www.genetex.com).