

MST3 antibody [N1C1]

Cat. No. GTX107500

Host	Rabbit
Clonality	Polyclonal
Isotype	IgG
Applications	WB, ICC/IF, IHC-P
Reactivity	Human

Package
100 µl, 25 µl

Applications

Application Note

*Optimal dilutions/concentrations should be determined by the researcher.

Suggested dilution	Recommended dilution
WB	1:500-1:3000
ICC/IF	1:100-1:1000
IHC-P	1:100-1:1000

Not tested in other applications.

Calculated MW 49 kDa. ([Note](#))

Properties

Form	Liquid
Buffer	0.1M Tris, 0.1M Glycine, 10% Glycerol
Preservative	0.01% Thimerosal
Storage	Store as concentrated solution. Centrifuge briefly prior to opening vial. For short-term storage (1-2 weeks), store at 4°C. For long-term storage, aliquot and store at -20°C or below. Avoid multiple freeze-thaw cycles.
Concentration	0.51 mg/ml (Please refer to the vial label for the specific concentration.)
Immunogen	Recombinant protein encompassing a sequence within the center region of human MST3. The exact sequence is proprietary.
Purification	Purified by antigen-affinity chromatography.
Conjugation	Unconjugated

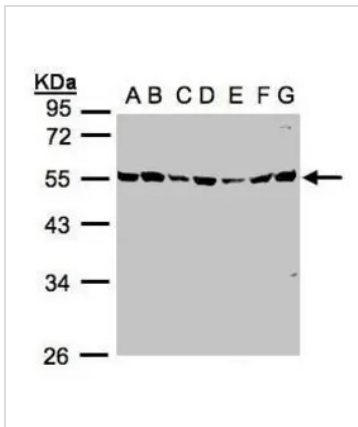
Note

For laboratory research use only. Not for any clinical, therapeutic, or diagnostic use in humans or animals. Not for animal or human consumption.

Purchasers shall not, and agree not to enable third parties to, analyze, copy, reverse engineer or otherwise attempt to determine the structure or sequence of the product.



For full product information, images and publications, please visit our [website](#).

DATA IMAGES

GTX107500 WB Image

Sample(30µg whole cell lysate)

A: 293T

B: A431 (GTX27909)

C: H1299

D: HeLa S3 (GTX14654)

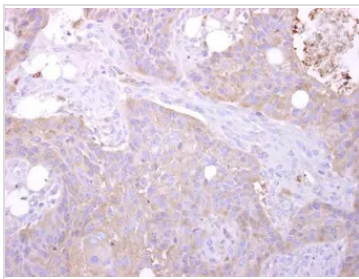
E: Hep G2 (GTX27900)

F: MOLT4 (GTX27912)

G: Raji (GTX27908)

10% SDS PAGE

GTX107500 diluted at 1:1000

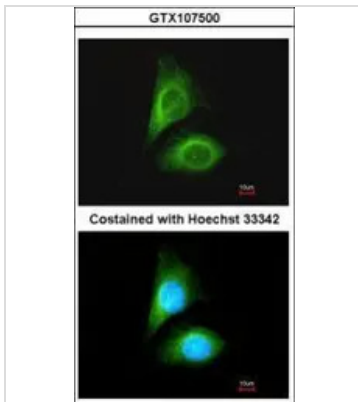

GTX107500 IHC-P Image

STK24 antibody [N1C1] detects STK24 protein at cytosol on HSC-3 xenograft by immunohistochemical analysis.

Sample: Paraffin-embedded HSC-3 xenograft.

STK24 antibody [N1C1] (GTX107500) dilution: 1:500.

Antigen Retrieval: Trilogy™ (EDTA based, pH 8.0) buffer, 15min


GTX107500 ICC/IF Image

Immunofluorescence analysis of methanol-fixed HeLa, using STK24(GTX107500) antibody at 1:100 dilution.



For full product information, images and publications, please visit our [website](https://www.genetex.com).