

LYK5 antibody

Cat. No. GTX107557

Host	Rabbit
Clonality	Polyclonal
Isotype	IgG
Applications	WB, ICC/IF, IHC-P
Reactivity	Human, Mouse

Package
100 µl, 25 µl

Applications

Application Note

*Optimal dilutions/concentrations should be determined by the researcher.

Suggested dilution	Recommended dilution
WB	1:500-1:3000
ICC/IF	1:100-1:1000
IHC-P	1:100-1:1000

Not tested in other applications.

Calculated MW 48 kDa. ([Note](#))

Properties

Form	Liquid
Buffer	PBS, 1% BSA, 20% Glycerol
Preservative	0.01% Thimerosal
Storage	Store as concentrated solution. Centrifuge briefly prior to opening vial. For short-term storage (1-2 weeks), store at 4°C. For long-term storage, aliquot and store at -20°C or below. Avoid multiple freeze-thaw cycles.
Concentration	1 mg/ml (Please refer to the vial label for the specific concentration.)
Immunogen	Recombinant protein encompassing a sequence within the center region of human LYK5. The exact sequence is proprietary.
Purification	Purified by antigen-affinity chromatography.
Conjugation	Unconjugated

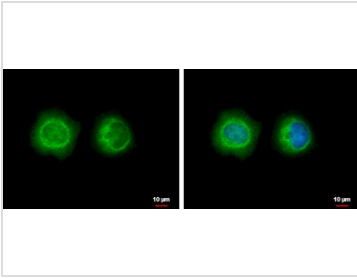
Note

For laboratory research use only. Not for any clinical, therapeutic, or diagnostic use in humans or animals. Not for animal or human consumption.

Purchasers shall not, and agree not to enable third parties to, analyze, copy, reverse engineer or otherwise attempt to determine the structure or sequence of the product.



For full product information, images and publications, please visit our [website](#).

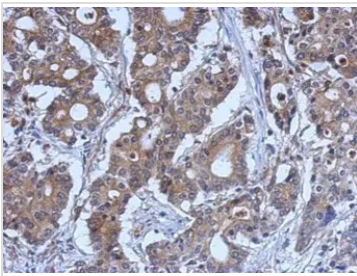
DATA IMAGES

GTX107557 ICC/IF Image

LYK5 antibody detects LYK5 protein at cytoplasm by immunofluorescent analysis.

Sample: MCF-7 cells were fixed in 4% paraformaldehyde at RT for 15 min.

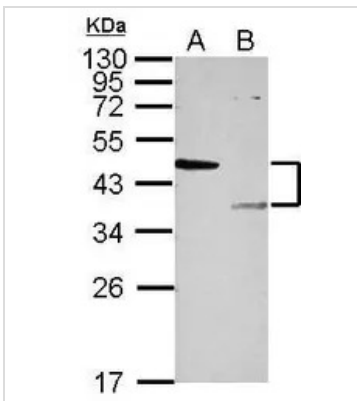
Green: LYK5 protein stained by LYK5 antibody (GTX107557) diluted at 1:500.

Blue: Hoechst 33342 staining.


GTX107557 IHC-P Image

Immunohistochemical analysis of paraffin-embedded human gastric cancer, using LYK5(GTX107557) antibody at 1:500 dilution.

Antigen Retrieval: Trilogy™ (EDTA based, pH 8.0) buffer, 15min


GTX107557 WB Image

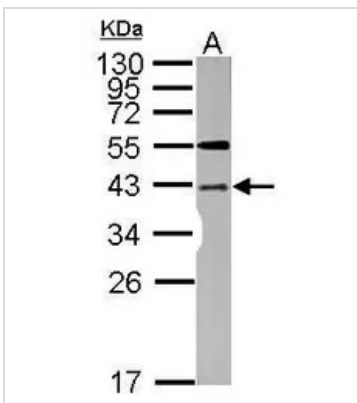
Sample (30 ug of whole cell lysate)

A: 293T

B: HepG2

12% SDS PAGE

GTX107557 diluted at 1:1000


GTX107557 WB Image

Sample (50 ug of whole cell lysate)

A: mouse brain

12% SDS PAGE

GTX107557 diluted at 1:1000



For full product information, images and publications, please visit our [website](http://www.genetex.com).