

Surfactant Protein A antibody

Cat. No. GTX10761

Host	Rabbit
Clonality	Polyclonal
Isotype	IgG
Applications	WB
Reactivity	Human, Rat

Package
100 µg

Applications

Application Note

*Optimal dilutions/concentrations should be determined by the researcher.

Suggested dilution	Recommended dilution
WB	0.1-0.5µg/ml
Not tested in other applications.	

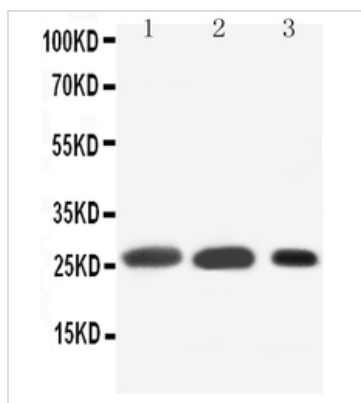
Calculated MW 26.24 kDa. ([Note](#))

Properties

Form	Liquid
Buffer	0.2% Na ₂ HPO ₄ , 0.9% NaCl, 50% Glycerol
Preservative	0.02% Sodium azide
Storage	Store as concentrated solution. Centrifuge briefly prior to opening vial. For short-term storage (1-2 weeks), store at 4°C. For long-term storage, aliquot and store at -20°C or below. Avoid multiple freeze-thaw cycles.
Concentration	0.5-1 mg/ml (Please refer to the vial label for the specific concentration.)
Immunogen	A synthetic peptide corresponding to a sequence at the C-terminus of human SFTPA1(221-236aa KEQCVEMYTDGQWNR), different from the rat sequence by two amino acids.
Purification	Purified by antigen-affinity chromatography
Conjugation	Unconjugated
Note	<p>For laboratory research use only. Not for any clinical, therapeutic, or diagnostic use in humans or animals. Not for animal or human consumption.</p> <p>Purchasers shall not, and agree not to enable third parties to, analyze, copy, reverse engineer or otherwise attempt to determine the structure or sequence of the product.</p>



For full product information, images and publications, please visit our [website](#).

DATA IMAGES

GTX10761 WB Image

WB analysis of various samples using GTX10761 Surfactant Protein A antibody.

Lane 1 : rat lung tissue lysate

Lane 2 : rat lung tissue lysate

Lane 3 : MK(55KD)



For full product information, images and publications, please visit our [website](https://www.genetex.com).