

## SART3 antibody [C3], C-term

**Cat. No. GTX107684**

<b>Host</b>	Rabbit
<b>Clonality</b>	Polyclonal
<b>Isotype</b>	IgG
<b>Application</b>	WB, ICC/IF, IHC-P, IP
<b>Reactivity</b>	Human

[Reference \( 2 \)](#)**Package**

100 µl, 25 µl

## APPLICATION

**Application Note**

\*Optimal dilutions/concentrations should be determined by the researcher.

Suggested dilution	Recommended dilution
WB	1:500-1:3000
ICC/IF	1:100-1:1000
IHC-P	1:100-1:1000
IP	1:100-1:500

Not tested in other applications.

**Calculated MW** 110 kDa. ([Note](#))**Product Note** Knockdown/Knockout validation was supported by references (PMID:26990993)

## PROPERTIES

<b>Form</b>	Liquid
<b>Buffer</b>	0.1M Tris, 0.1M Glycine, 10% Glycerol
<b>Preservative</b>	0.01% Thimerosal
<b>Storage</b>	Store as concentrated solution. Centrifuge briefly prior to opening vial. For short-term storage (1-2 weeks), store at 4°C. For long-term storage, aliquot and store at -20°C or below. Avoid multiple freeze-thaw cycles.
<b>Concentration</b>	0.52 mg/ml (Please refer to the vial label for the specific concentration.)
<b>Immunogen</b>	Carrier-protein conjugated synthetic peptide encompassing a sequence within the C-terminus region of human SART3. The exact sequence is proprietary.
<b>Purification</b>	Purified by antigen-affinity chromatography.
<b>Conjugation</b>	Unconjugated



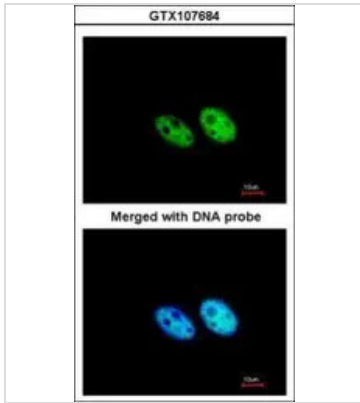
For full product information, images and publications, please visit our [website](#).

For laboratory research use only. Not for any clinical, therapeutic, or diagnostic use in humans or animals. Not for animal or human consumption.

## Note

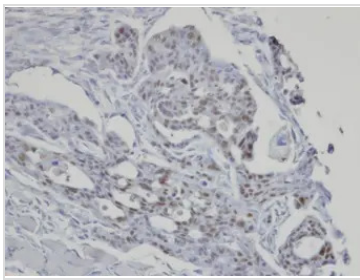
Purchasers shall not, and agree not to enable third parties to, analyze, copy, reverse engineer or otherwise attempt to determine the structure or sequence of the product.

## DATA IMAGES



### GTx107684 ICC/IF Image

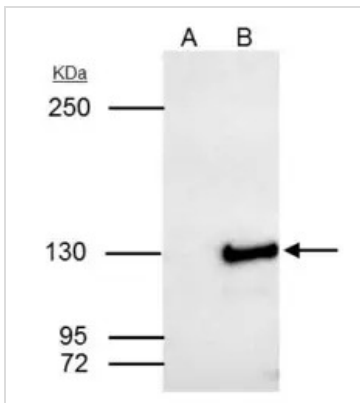
Immunofluorescence analysis of paraformaldehyde-fixed HeLa, using SART3(GTX107684) antibody at 1:200 dilution.



### GTx107684 IHC-P Image

Immunohistochemical analysis of paraffin-embedded NCI-N87 xenograft, using SART3 (GTx107684) antibody at 1:100 dilution.

Antigen Retrieval: Trilogy™ (EDTA based, pH 8.0) buffer, 15min



### GTx107684 IP Image

SART3 antibody [C3], C-term immunoprecipitates SART3 protein in IP experiments.

IP samples: HepG2 whole cell extract

A. Control with 4 µg of preimmune Rabbit IgG

B. Immunoprecipitation of SART3 protein by 4 µg SART3 antibody [C3], C-term (GTx107684)

5 % SDS-PAGE

The immunoprecipitated SART3 protein was detected by SART3 antibody [C3], C-term (GTx107684) diluted at 1:2000.

[EasyBlot anti-rabbit IgG (GTx221666-01) was used as a secondary reagent]



For full product information, images and publications, please visit our [website](https://www.genetex.com).