

SHANK1 antibody [C3], C-term

Cat. No. GTX107701

| | |
|---------------------|---------------------------|
| Host | Rabbit |
| Clonality | Polyclonal |
| Isotype | IgG |
| Applications | WB, ICC/IF, IHC-P, IHC-Fr |
| Reactivity | Human, Mouse, Rat |

Package
100 µl, 25 µl

Applications

Application Note

*Optimal dilutions/concentrations should be determined by the researcher.

| Suggested dilution | Recommended dilution |
|--------------------|----------------------|
| WB | 1:500-1:3000 |
| ICC/IF | 1:100-1:1000 |
| IHC-P | 1:100-1:1000 |
| IHC-Fr | 1:100-1:1000 |

Not tested in other applications.

Calculated MW 225 kDa. ([Note](#))

Properties

| | |
|----------------------|--|
| Form | Liquid |
| Buffer | 0.1M Tris, 0.1M Glycine, 10% Glycerol |
| Preservative | 0.01% Thimerosal |
| Storage | Store as concentrated solution. Centrifuge briefly prior to opening vial. For short-term storage (1-2 weeks), store at 4°C. For long-term storage, aliquot and store at -20°C or below. Avoid multiple freeze-thaw cycles. |
| Concentration | 0.53 mg/ml (Please refer to the vial label for the specific concentration.) |
| Immunogen | Carrier-protein conjugated synthetic peptide encompassing a sequence within the C-terminus region of human SHANK1. The exact sequence is proprietary. |
| Purification | Purified by antigen-affinity chromatography. |
| Conjugation | Unconjugated |



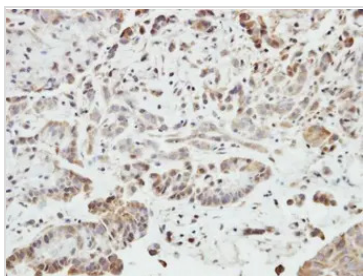
For full product information, images and publications, please visit our [website](#).

For laboratory research use only. Not for any clinical, therapeutic, or diagnostic use in humans or animals. Not for animal or human consumption.

Note

Purchasers shall not, and agree not to enable third parties to, analyze, copy, reverse engineer or otherwise attempt to determine the structure or sequence of the product.

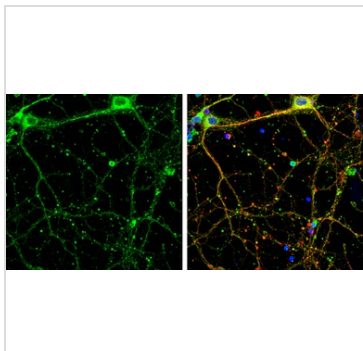
DATA IMAGES



GTX107701 IHC-P Image

Immunohistochemical analysis of paraffin-embedded SW480 xenograft, using SHANK1(GTX107701) antibody at 1:500 dilution.

Antigen Retrieval: Trilogy™ (EDTA based, pH 8.0) buffer, 15min



GTX107701 ICC/IF Image

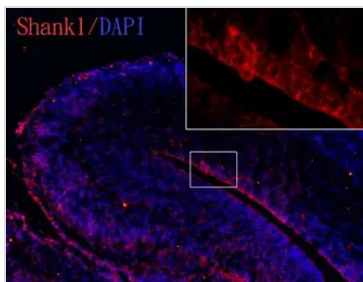
SHANK1 antibody [C3], C-term detects SHANK1 protein at cell body and synaptic vesicles by immunofluorescent analysis.

Sample: DIV9 rat E18 primary cortical neurons were fixed in 4% paraformaldehyde at RT for 15 min.

Green: SHANK1 protein stained by SHANK1 antibody [C3], C-term (GTX107701) diluted at 1:500.

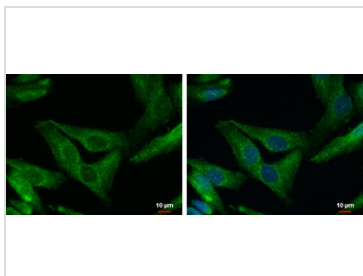
Red: beta Tubulin 3/ Tuj1, a neuron cell marker, stained by beta Tubulin 3/ Tuj1 antibody [GT11710] (GTX631836) diluted at 1:500.

Blue: Fluoroshield with DAPI (GTX30920).



GTX107701 IHC-Fr Image

SHANK1 antibody [C3] detects SHANK1 protein on embryonic mouse brain by immunohistochemical analysis. Sample: Frozen section of embryonic mouse brain (mE18.5). Red: SHANK1 antibody [C3] (GTX107701) diluted at 1:250. Blue: DAPI



GTX107701 ICC/IF Image

SHANK1 antibody [C3], C-term detects SHANK1 protein at cytoplasm by immunofluorescent analysis.

Sample: SKNSH cells were fixed in 4% paraformaldehyde at RT for 15 min.

Green: SHANK1 protein stained by SHANK1 antibody [C3], C-term (GTX107701) diluted at 1:500.

Blue: Hoechst 33342 staining.



For full product information, images and publications, please visit our [website](https://www.genetex.com).