

GOLPH2 antibody [C3], C-term

Cat. No. GTX107702

Host	Rabbit
Clonality	Polyclonal
Isotype	IgG
Applications	WB, ICC/IF, IHC-P
Reactivity	Human

References (5)

Package

100 µl, 25 µl

PRODUCT

Summary

Golgi membrane protein 1, also known as GP73, GOLM1, and GOLPH2, is a type II Golgi membrane glycoprotein with a predicted molecular weight of 45 kDa. GOLPH2 is often overexpressed in the hepatocytes of patients with hepatitis and hepatocellular carcinoma (HCC). Reports indicate that GOLPH2 is a promising serum marker for the diagnosis of HCC.

Applications

Application Note

*Optimal dilutions/concentrations should be determined by the researcher.

Suggested dilution	Recommended dilution
WB	1:500-1:3000
ICC/IF	1:100-1:5000
IHC-P	1:100-1:1000

Not tested in other applications.

Calculated MW 45 kDa. ([Note](#))

Properties

Form	Liquid
Buffer	PBS, 20% Glycerol
Preservative	0.01% Thimerosal
Storage	Store as concentrated solution. Centrifuge briefly prior to opening vial. For short-term storage (1-2 weeks), store at 4°C. For long-term storage, aliquot and store at -20°C or below. Avoid multiple freeze-thaw cycles.
Concentration	1 mg/ml (Please refer to the vial label for the specific concentration.)
Immunogen	Carrier-protein conjugated synthetic peptide encompassing a sequence within the C-terminus region of human GOLPH2. The exact sequence is proprietary.
Purification	Purified by antigen-affinity chromatography.
Conjugation	Unconjugated



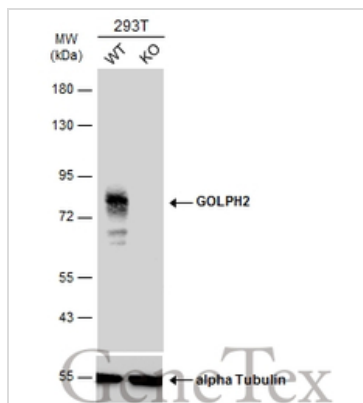
For full product information, images and publications, please visit our [website](#).

For laboratory research use only. Not for any clinical, therapeutic, or diagnostic use in humans or animals. Not for animal or human consumption.

Note

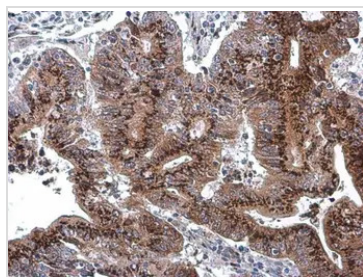
Purchasers shall not, and agree not to enable third parties to, analyze, copy, reverse engineer or otherwise attempt to determine the structure or sequence of the product.

DATA IMAGES



GTx107702 WB Image

Wild-type (WT) and GOLPH2 knockout (KO) 293T cell extracts (30 µg) were separated by 7.5% SDS-PAGE, and the membrane was blotted with GOLPH2 antibody [C3], C-term (GTx107702) diluted at 1:500. The HRP-conjugated anti-rabbit IgG antibody (GTx213110-01) was used to detect the primary antibody.

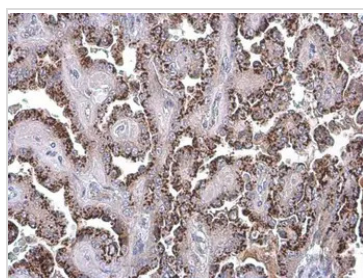


GTx107702 IHC-P Image

GOLPH2 antibody [C3], C-term detects GOLPH2 protein at cytoplasm by immunohistochemical analysis. Sample: Paraffin-embedded human colon cancer.

GOLPH2 stained by GOLPH2 antibody [C3], C-term (GTx107702) diluted at 1:1000.

Antigen Retrieval: Citrate buffer, pH 6.0, 15 min



GTx107702 IHC-P Image

GOLPH2 antibody [C3], C-term detects GOLPH2 protein at cytoplasm by immunohistochemical analysis.

Sample: Paraffin-embedded human endometrial carcinoma.

GOLPH2 stained by GOLPH2 antibody [C3], C-term (GTx107702) diluted at 1:1000.

Antigen Retrieval: Citrate buffer, pH 6.0, 15 min



For full product information, images and publications, please visit our [website](https://www.genetex.com).