

HS1BP3 antibody [C2C3], C-term

Cat. No. GTX107715

Host	Rabbit
Clonality	Polyclonal
Isotype	IgG
Applications	WB, ICC/IF, IHC-P
Reactivity	Human, Zebrafish

References (1)

Package

100 µl, 25 µl

Applications

Application Note

*Optimal dilutions/concentrations should be determined by the researcher.

Suggested dilution	Recommended dilution
WB	1:5000-1:20000
ICC/IF	Assay dependent
IHC-P	1:100-1:1000

Not tested in other applications.

Calculated MW	43 kDa. (Note)
Product Note	KO/KD validation is based on published data (PMID: 28004827).

Properties

Form	Liquid
Buffer	0.1M Tris, 0.1M Glycine, 10% Glycerol
Preservative	0.01% Thimerosal
Storage	Store as concentrated solution. Centrifuge briefly prior to opening vial. For short-term storage (1-2 weeks), store at 4°C. For long-term storage, aliquot and store at -20°C or below. Avoid multiple freeze-thaw cycles.
Concentration	1 mg/ml (Please refer to the vial label for the specific concentration.)
Immunogen	Carrier-protein conjugated synthetic peptide encompassing a sequence within the C-terminus region of human HS1BP3. The exact sequence is proprietary.
Purification	Purified by antigen-affinity chromatography.
Conjugation	Unconjugated

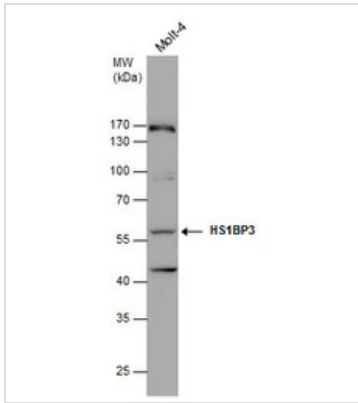


For full product information, images and publications, please visit our [website](#).

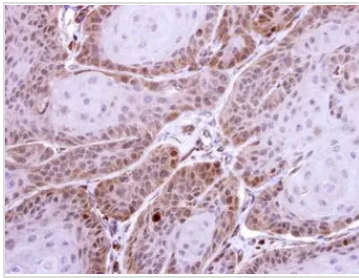
For laboratory research use only. Not for any clinical, therapeutic, or diagnostic use in humans or animals. Not for animal or human consumption.

Note

Purchasers shall not, and agree not to enable third parties to, analyze, copy, reverse engineer or otherwise attempt to determine the structure or sequence of the product.

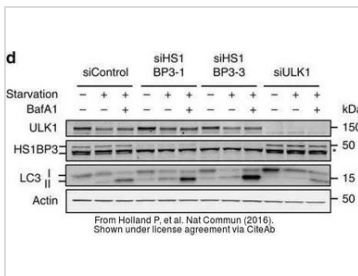
DATA IMAGES

GTx107715 WB Image

HS1BP3 antibody detects HS1BP3 protein by western blot analysis. Whole cell extracts (30 µg) was separated by 10% SDS-PAGE, and the membrane was blotted with HS1BP3 antibody (GTx107715) at a dilution of 1:10000.

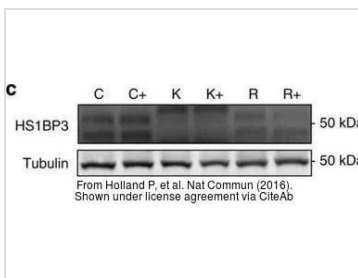

GTx107715 IHC-P Image

Immunohistochemical analysis of paraffin-embedded Cal27 xenograft, using HS1BP3(GTx107715) antibody at 1:500 dilution.

Antigen Retrieval: Trilogy™ (EDTA based, pH 8.0) buffer, 15min


GTx107715 WB Image

The data was published in the journal Nat Commun in 2016. [PMID: 28004827](https://pubmed.ncbi.nlm.nih.gov/28004827/)


GTx107715 WB Image

The data was published in the journal Nat Commun in 2016. [PMID: 28004827](https://pubmed.ncbi.nlm.nih.gov/28004827/)



For full product information, images and publications, please visit our [website](https://www.genetex.com).