

OSBPL6 antibody [C3], C-term

Cat. No. GTX107723

Host	Rabbit
Clonality	Polyclonal
Isotype	IgG
Applications	WB, ICC/IF, IHC-P
Reactivity	Human

Package
100 µl, 25 µl

Applications

Application Note

*Optimal dilutions/concentrations should be determined by the researcher.

Suggested dilution	Recommended dilution
WB	1:500-1:3000
ICC/IF	1:100-1:1000
IHC-P	1:100-1:1000

Not tested in other applications.

Calculated MW 106 kDa. ([Note](#))

Properties

Form	Liquid
Buffer	0.1M Tris, 0.1M Glycine, 10% Glycerol
Preservative	0.01% Thimerosal
Storage	Store as concentrated solution. Centrifuge briefly prior to opening vial. For short-term storage (1-2 weeks), store at 4°C. For long-term storage, aliquot and store at -20°C or below. Avoid multiple freeze-thaw cycles.
Concentration	1 mg/ml (Please refer to the vial label for the specific concentration.)
Immunogen	Carrier-protein conjugated synthetic peptide encompassing a sequence within the C-terminus region of human OSBPL6. The exact sequence is proprietary.
Purification	Purified by antigen-affinity chromatography.
Conjugation	Unconjugated

Note

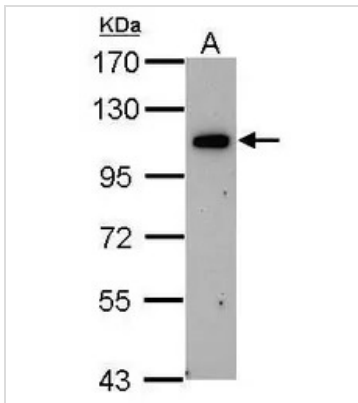
For laboratory research use only. Not for any clinical, therapeutic, or diagnostic use in humans or animals. Not for animal or human consumption.

Purchasers shall not, and agree not to enable third parties to, analyze, copy, reverse engineer or otherwise attempt to determine the structure or sequence of the product.



For full product information, images and publications, please visit our [website](#).

DATA IMAGES



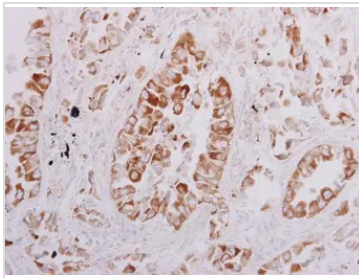
GTX107723 WB Image

Sample (30 ug of whole cell lysate)

A: U87-MG

7.5% SDS PAGE

GTX107723 diluted at 1:1000



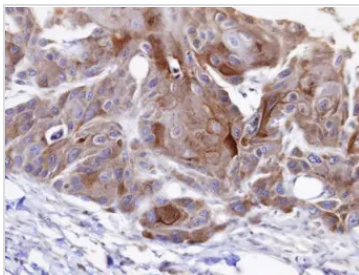
GTX107723 IHC-P Image

OSBPL6 antibody [C3], C-term detects OSBPL6 protein at cytoplasm in human lung adenocarcinoma by immunohistochemical analysis.

Sample: Paraffin-embedded human lung adenocarcinoma.

OSBPL6 antibody [C3], C-term (GTX107723) diluted at 1:500.

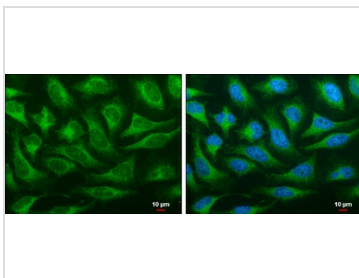
Antigen Retrieval: Trilogy™ (EDTA based, pH 8.0) buffer, 15min



GTX107723 IHC-P Image

Immunohistochemical analysis of paraffin-embedded SCC15 xenograft, using OSBPL6 (GTX107723) antibody at 1:100 dilution.

Antigen Retrieval: Trilogy™ (EDTA based, pH 8.0) buffer, 15min



GTX107723 ICC/IF Image

OSBPL6 antibody [C3], C-term detects OSBPL6 protein at cytoplasm by immunofluorescent analysis.

Sample: HeLa cells were fixed in 4% paraformaldehyde at RT for 15 min.

Green: OSBPL6 protein stained by OSBPL6 antibody [C3], C-term (GTX107723) diluted at 1:200.

Blue: Hoechst 33342 staining.

Scale bar = 10 μm.



For full product information, images and publications, please visit our [website](https://www.genetex.com).