

TOMM7 antibody [N1C3]

Cat. No. GTX107731

Host	Rabbit
Clonality	Polyclonal
Isotype	IgG
Applications	WB, ICC/IF
Reactivity	Human

References (1)

Package

100 µl, 25 µl

Applications

Application Note

*Optimal dilutions/concentrations should be determined by the researcher.

Suggested dilution	Recommended dilution
WB	Assay dependent
ICC/IF	1:100-1:1000

Not tested in other applications.

Calculated MW 6 kDa. ([Note](#))

Properties

Form	Liquid
Buffer	0.1M Tris, 0.1M Glycine, 10% Glycerol
Preservative	0.01% Thimerosal
Storage	Store as concentrated solution. Centrifuge briefly prior to opening vial. For short-term storage (1-2 weeks), store at 4°C. For long-term storage, aliquot and store at -20°C or below. Avoid multiple freeze-thaw cycles.
Concentration	1 mg/ml (Please refer to the vial label for the specific concentration.)
Immunogen	Carrier-protein conjugated synthetic peptide encompassing a sequence within the N-terminus region of human TOMM7. The exact sequence is proprietary.
Purification	Purified by antigen-affinity chromatography.
Conjugation	Unconjugated

Note

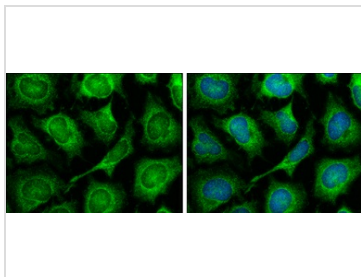
For laboratory research use only. Not for any clinical, therapeutic, or diagnostic use in humans or animals. Not for animal or human consumption.

Purchasers shall not, and agree not to enable third parties to, analyze, copy, reverse engineer or otherwise attempt to determine the structure or sequence of the product.



For full product information, images and publications, please visit our [website](#).

DATA IMAGES



GTX107731 ICC/IF Image

TOMM7 antibody [N1C3] detects TOMM7 protein at mitochondria by immunofluorescent analysis.

Sample: HeLa cells were fixed in ice-cold MeOH for 5 min.

Green: TOMM7 stained by TOMM7 antibody [N1C3] (GTX107731) diluted at 1:500.

Blue: Hoechst 33342 staining.



For full product information, images and publications, please visit our [website](#).