

GULP1 antibody [C2C3], C-term

Cat. No. GTX107740

Host	Rabbit
Clonality	Polyclonal
Isotype	IgG
Applications	WB, IHC
Reactivity	Human, Mouse, Rat

[References \(2 \)](#)[Package](#)

100 µl, 25 µl

Applications

Application Note

*Optimal dilutions/concentrations should be determined by the researcher.

Suggested dilution	Recommended dilution
WB	1:500-1:3000
IHC	Assay dependent

Not tested in other applications.

Calculated MW 34 kDa. ([Note](#))

Properties

Form	Liquid
Buffer	0.1M Tris, 0.1M Glycine, 10% Glycerol
Preservative	0.01% Thimerosal
Storage	Store as concentrated solution. Centrifuge briefly prior to opening vial. For short-term storage (1-2 weeks), store at 4°C. For long-term storage, aliquot and store at -20°C or below. Avoid multiple freeze-thaw cycles.
Concentration	1 mg/ml (Please refer to the vial label for the specific concentration.)
Immunogen	Carrier-protein conjugated synthetic peptide encompassing a sequence within the C-terminus region of human GULP1. The exact sequence is proprietary.
Purification	Purified by antigen-affinity chromatography.
Conjugation	Unconjugated

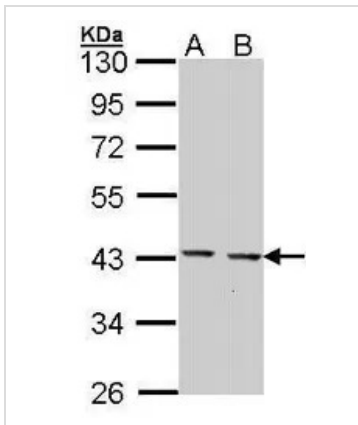
Note

For laboratory research use only. Not for any clinical, therapeutic, or diagnostic use in humans or animals. Not for animal or human consumption.

Purchasers shall not, and agree not to enable third parties to, analyze, copy, reverse engineer or otherwise attempt to determine the structure or sequence of the product.

For full product information, images and publications, please visit our [website](#).

DATA IMAGES



GTX107740 WB Image

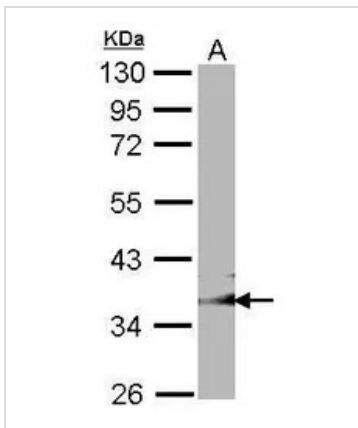
Sample (30 ug of whole cell lysate)

A: Hep G2 (GTX27900)

B: Molt-4 (GTX27912)

10% SDS PAGE

GTX107740 diluted at 1:1000



GTX107740 WB Image

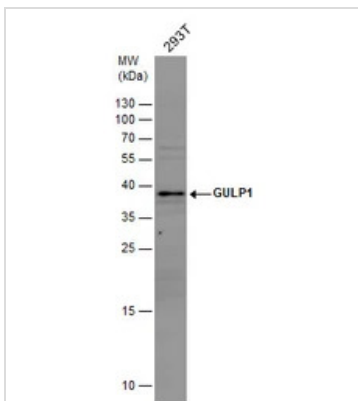
Sample (30 ug of whole cell lysate)

A: NIH-3T3

10% SDS PAGE

GULP1 antibody

GTX107740 diluted at 1:1000



GTX107740 WB Image

GULP1 antibody detects GULP1 protein by western blot analysis. Whole cell extracts (30 μ g) was separated by 15% SDS-PAGE, and the membrane was blotted with GULP1 antibody (GTX107740) diluted by 1:1000.



For full product information, images and publications, please visit our [website](https://www.genetex.com).